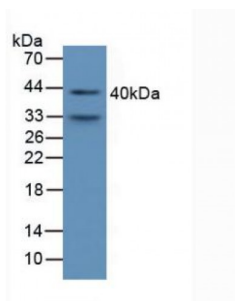


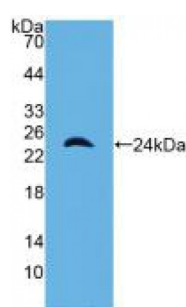
Abbexa Ltd, Innovation Centre, Cambridge Science Park, Cambridge, CB4 0EY, UK
Telephone: +44 (0) 1223 755950 - Fax: +44 (0) 1223 755951 - E-Mail: info@abbexa.com

Alpha-1-Microglobulin/Bikunin Precursor (a1M) Antibody

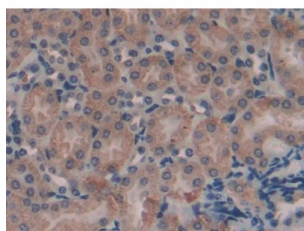
Catalogue No.: abx103987



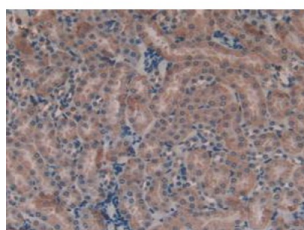
Western blot analysis of Mouse Serum.



Western blot analysis of recombinant Mouse a1M.



IHC-P analysis of Mouse Kidney Tissue, with DAB staining.



IHC-P analysis of Mouse Kidney Tissue, with DAB staining.

Polyclonal Antibody to Alpha-1-Microglobulin/Bikunin Precursor (AMBP).

Target: Alpha-1-Microglobulin/Bikunin Precursor (a1M)

Reactivity: Mouse

Host: Rabbit

Abbexa Ltd, Innovation Centre, Cambridge Science Park, Cambridge, CB4 0EY, UK
Telephone: +44 (0) 1223 755950 - Fax: +44 (0) 1223 755951 - E-Mail: info@abbexa.com

Clonality: Polyclonal

Tested Applications: WB, IHC, IF/ICC, IP

Recommended dilutions: WB: 1/100 - 400, ICC: 1/100 - 500, IHC-F: 1/100 - 500, IHC-P: 1/50 - 200, ELISA: 1/100 - 200.
Optimal dilutions/concentrations should be determined by the end user.

Immunogen: a1M (Arg18-Ala202)

Purification: Antigen-specific affinity chromatography followed by Protein A affinity chromatography.

Form: Liquid

Conjugation: Unconjugated

Specificity: The antibody is a rabbit polyclonal antibody raised against a1M. It has been selected for its ability to recognize a1M in immunohistochemical staining and western blotting.

Storage: Store at 4 °C for frequent use. Aliquot and store at -20 °C for one year. Avoid repeated freeze/thaw cycles.

Swiss Prot: [Q07456](#)

Buffer: 0.01 M PBS, pH 7.4, containing 0.05% Proclin-300, 50% glycerol.

Note: This product is for research use only.