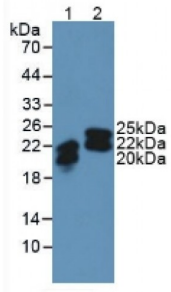


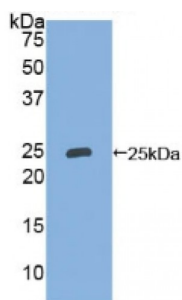
Abbexa Ltd, Innovation Centre, Cambridge Science Park, Cambridge, CB4 0EY, UK  
Telephone: +44 (0) 1223 755950 - Fax: +44 (0) 1223 755951 - E-Mail: info@abbexa.com

## Neutrophil Gelatinase Associated Lipocalin (NGAL) Antibody

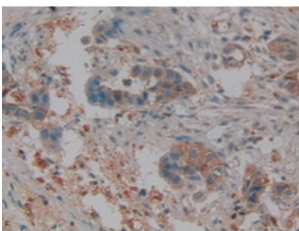
Catalogue No.: abx104244



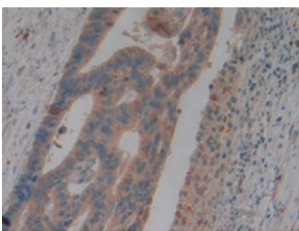
Western blot analysis of (1) Human SW480 Cells and (2) Human Urine.



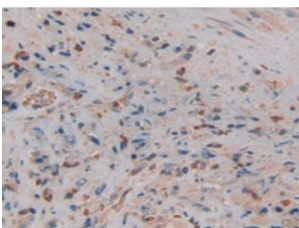
Western blot analysis of recombinant Human NGAL.



IHC-P analysis of Human Pancreas Cancer Tissue, with DAB staining.



IHC-P analysis of Human Rectum Cancer Tissue, with DAB staining.



IHC-P analysis of Human Prostate Gland Cancer Tissue, with DAB staining.

Polyclonal Antibody to NGAL (NGAL).

Abbexa Ltd, Innovation Centre, Cambridge Science Park, Cambridge, CB4 0EY, UK  
Telephone: +44 (0) 1223 755950 - Fax: +44 (0) 1223 755951 - E-Mail: [info@abbexa.com](mailto:info@abbexa.com)

<b>Target:</b>	Neutrophil Gelatinase Associated Lipocalin (NGAL)
<b>Reactivity:</b>	Human
<b>Host:</b>	Rabbit
<b>Clonality:</b>	Polyclonal
<b>Tested Applications:</b>	WB, IHC, IF/ICC, IP
<b>Recommended dilutions:</b>	Optimal dilutions/concentrations should be determined by the end user.
<b>Immunogen:</b>	<a href="#">abx068279</a> - Recombinant NGAL (Gln21-Gly198) expressed in E. coli.
<b>Purification:</b>	Antigen-specific affinity chromatography followed by Protein A affinity chromatography.
<b>Form:</b>	Liquid
<b>Isotype:</b>	IgG
<b>Conjugation:</b>	Unconjugated
<b>Storage:</b>	Store at 4 °C for frequent use. Aliquot and store at -20 °C for one year. Avoid repeated freeze/thaw cycles.
<b>Swiss Prot:</b>	<a href="#">P80188</a>
<b>GeneID:</b>	<a href="#">3934</a>
<b>Gene Symbol:</b>	LCN2
<b>OMIM:</b>	<a href="#">600181</a>
<b>HGNC:</b>	6526
<b>Ensembl:</b>	ENSG00000148346
<b>Buffer:</b>	0.01 M PBS, pH 7.4, containing 0.05% Proclin-300, 50% glycerol.
<b>Note:</b>	This product is for research use only.