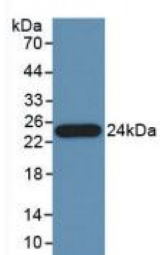


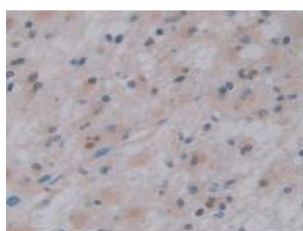
Abbexa Ltd, Innovation Centre, Cambridge Science Park, Cambridge, CB4 0EY, UK
Telephone: +44 (0) 1223 755950 - Fax: +44 (0) 1223 755951 - E-Mail: info@abbexa.com

Pancreas Specific Transcription Factor 1a (PTF1a) Antibody

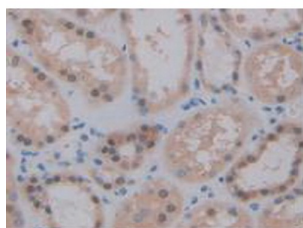
Catalogue No.: abx104250



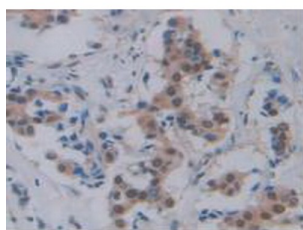
Western blot analysis of recombinant Human PTF1a.



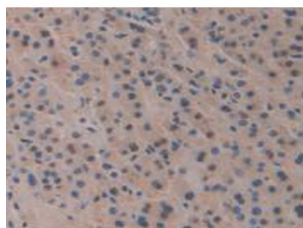
IHC-P analysis of Human Glioma Tissue, with DAB staining.



IHC-P analysis of Human Kidney Tissue, with DAB staining.



IHC-P analysis of Human Breast Cancer Tissue, with DAB staining.



IHC-P analysis of Human Liver Tissue, with DAB staining.

Polyclonal Antibody to Pancreas Specific Transcription Factor 1a (PTF1a).

Abbexa Ltd, Innovation Centre, Cambridge Science Park, Cambridge, CB4 0EY, UK
Telephone: +44 (0) 1223 755950 - Fax: +44 (0) 1223 755951 - E-Mail: info@abbexa.com

| | |
|-------------------------------|--|
| Target: | Pancreas Specific Transcription Factor 1a (PTF1a) |
| Reactivity: | Human |
| Host: | Rabbit |
| Clonality: | Polyclonal |
| Tested Applications: | WB, IHC, IF/ICC, IP |
| Recommended dilutions: | Optimal dilutions/concentrations should be determined by the end user. |
| Immunogen: | PTF1a (Gln177-Ser328) |
| Purification: | Antigen-specific affinity chromatography followed by Protein A affinity chromatography. |
| Form: | Liquid |
| Conjugation: | Unconjugated |
| Storage: | Store at 4 °C for frequent use. Aliquot and store at -20 °C for one year. Avoid repeated freeze/thaw cycles. |
| Swiss Prot: | Q7RTS3 |
| Buffer: | 0.01 M PBS, pH 7.4, containing 0.05% Proclin-300, 50% glycerol. |
| Note: | This product is for research use only. |