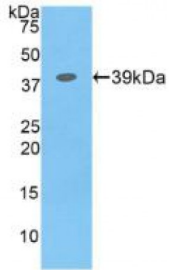
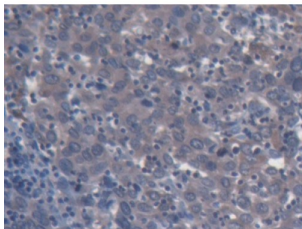


Colony Stimulating Factor 2 Receptor Beta (CSF2Rb) Antibody

Catalogue No.: abx104269



Western blot analysis of recombinant Human CSF2Rb.



IHC-P analysis of Human Endometrial cancer Tissue, with DAB staining.

Polyclonal Antibody to Colony Stimulating Factor 2 Receptor Beta (CSF2Rb).

Target:	Colony Stimulating Factor 2 Receptor Beta (CSF2Rb)
Reactivity:	Human
Host:	Rabbit
Clonality:	Polyclonal
Tested Applications:	WB, IHC, IF/ICC, IP
Recommended dilutions:	Optimal dilutions/concentrations should be determined by the end user.
Immunogen:	CSF2Rb (Pro133-Val233)
Purification:	Antigen-specific affinity chromatography followed by Protein A affinity chromatography.
Form:	Liquid
Conjugation:	Unconjugated
Storage:	Store at 4 °C for frequent use. Aliquot and store at -20 °C for one year. Avoid repeated freeze/thaw cycles.

Abbexa Ltd, Innovation Centre, Cambridge Science Park, Cambridge, CB4 0EY, UK
Telephone: +44 (0) 1223 755950 - Fax: +44 (0) 1223 755951 - E-Mail: info@abbexa.com

Swiss Prot: [P32927](#)

Buffer: 0.01 M PBS, pH 7.4, containing 0.05% Proclin-300, 50% glycerol.

Note: This product is for research use only.