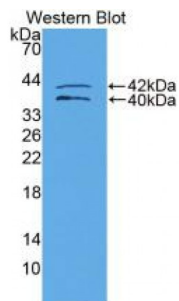


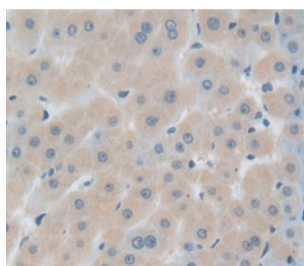
Abbexa Ltd, Innovation Centre, Cambridge Science Park, Cambridge, CB4 0EY, UK
Telephone: +44 (0) 1223 755950 - Fax: +44 (0) 1223 755951 - E-Mail: info@abbexa.com

Insulin Like Growth Factor Binding Protein 1 (IGFBP1) Antibody

Catalogue No.: abx104395



Western blot analysis of recombinant Human IGFBP1.



IHC-P analysis of Human Tissue, with DAB staining.

Polyclonal Antibody to Insulin Like Growth Factor Binding Protein 1 (IGFBP1).

Target: Insulin Like Growth Factor Binding Protein 1 (IGFBP1)

Reactivity: Human

Host: Rabbit

Clonality: Polyclonal

Tested Applications: WB, IHC, IF/ICC, IP

Recommended dilutions: WB: (1/50 - 400), IF/ICC: (1/50 - 500), IHC-F: (1/50 - 500), IHC-P: (1/10 - 100), ELISA: (1/100 - 200). Optimal dilutions/concentrations should be determined by the end user.

Immunogen: IGFBP1 (Asp159-Pro249)

Purification: Antigen-specific affinity chromatography followed by Protein A affinity chromatography.

Form: Liquid

Conjugation: Unconjugated

Specificity: The antibody is a rabbit polyclonal antibody raised against IGFBP1. It has been selected for its ability to recognize IGFBP1 in immunohistochemical staining and western blotting.

Abbexa Ltd, Innovation Centre, Cambridge Science Park, Cambridge, CB4 0EY, UK
Telephone: +44 (0) 1223 755950 - Fax: +44 (0) 1223 755951 - E-Mail: info@abbexa.com

Storage: Store at 4 °C for frequent use. Aliquot and store at -20 °C for one year. Avoid repeated freeze/thaw cycles.

Swiss Prot: [P08833](#)

Buffer: PBS, pH 7.4, containing 0.02% NaN₃, 50% glycerol.

Note: This product is for research use only.