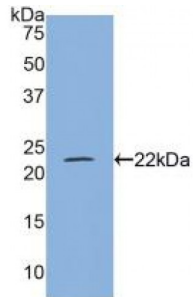
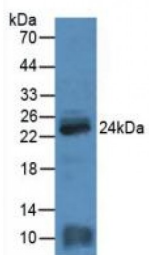


Myosin Light Chain 4, Alkali, Atrial, Embryonic (MYL4) Antibody

Catalogue No.: abx104442



Western blot analysis of recombinant Mouse MYL4.



Western blot analysis of Rat Heart Tissue.

Polyclonal Antibody to Myosin Light Chain 4, Alkali, Atrial, Embryonic (MYL4).

Target:	Myosin Light Chain 4, Alkali, Atrial, Embryonic (MYL4)
Reactivity:	Mouse
Host:	Rabbit
Clonality:	Polyclonal
Tested Applications:	WB, IHC, IF/ICC, IP
Recommended dilutions:	WB: 0.5-2 µg/ml, IHC: 5-20 µg/ml, IF/ICC: 5-20 µg/ml. Optimal dilutions/concentrations should be determined by the end user.
Immunogen:	abx068170 - Recombinant MYL4 (Lys4-Val187) expressed in E. coli
Purification:	Antigen-specific affinity chromatography followed by Protein A affinity chromatography.
Form:	Liquid
Conjugation:	Unconjugated
Storage:	Store at 4 °C for frequent use. Aliquot and store at -20 °C for one year. Avoid repeated freeze/thaw cycles.

Abbexa Ltd, Innovation Centre, Cambridge Science Park, Cambridge, CB4 0EY, UK
Telephone: +44 (0) 1223 755950 - Fax: +44 (0) 1223 755951 - E-Mail: info@abbexa.com

Swiss Prot: [P09541](#)

Buffer: PBS, pH 7.4, containing 0.02% NaN₃, 50% glycerol.

Note: This product is for research use only.