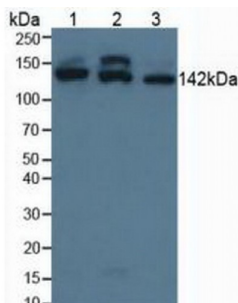
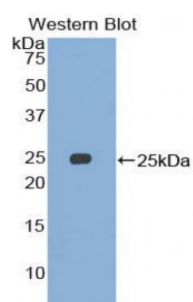


Structural Maintenance of Chromosomes Protein 3 (SMC3) Antibody

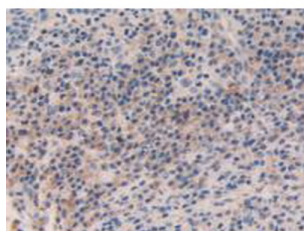
Catalogue No.: abx104450



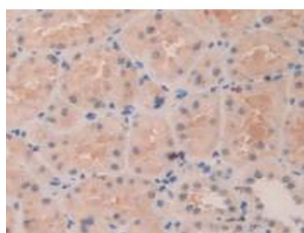
Western blot analysis of (1) Human HepG2 Cells, (2) Human HeLa cells and (3) Human Jurkat Cells.



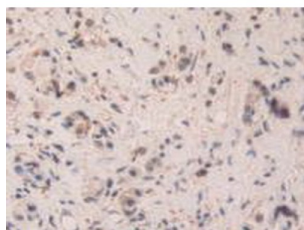
Western blot analysis of recombinant Human SMC3.



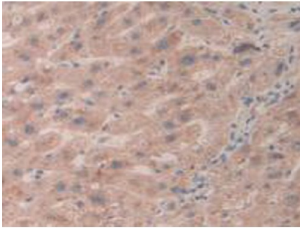
IHC-P analysis of Human Skin Cancer Tissue, with DAB staining.



IHC-P analysis of Human Kidney Tissue, with DAB staining.



IHC-P analysis of Human Stomach Cancer Tissue, with DAB staining.



IHC-P analysis of Human Liver Tissue, with DAB staining.

Polyclonal Antibody to Structural Maintenance Of Chromosomes Protein 3 (SMC3).

Target:	Structural Maintenance Of Chromosomes Protein 3 (SMC3)
Reactivity:	Human
Host:	Rabbit
Clonality:	Polyclonal
Tested Applications:	WB, IHC, IF/ICC, IP
Recommended dilutions:	Optimal dilutions/concentrations should be determined by the end user.
Immunogen:	SMC3 (Ser994-Glu1181)
Purification:	Antigen-specific affinity chromatography followed by Protein A affinity chromatography.
Form:	Liquid
Conjugation:	Unconjugated
Storage:	Store at 4 °C for frequent use. Aliquot and store at -20 °C for one year. Avoid repeated freeze/thaw cycles.
Buffer:	0.01 M PBS, pH 7.4, containing 0.05% Proclin-300, 50% glycerol.
Note:	This product is for research use only.