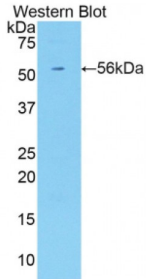


Killer Cell Immunoglobulin Like Receptor 3DL2 (KIR3DL2) Antibody

Catalogue No.: abx104484



Western blot analysis of the recombinant protein.

Polyclonal Antibody to Killer Cell Immunoglobulin Like Receptor 3DL2 (KIR3DL2).

Target: Killer Cell Immunoglobulin Like Receptor 3DL2 (KIR3DL2)**Reactivity:** Human**Host:** Rabbit**Clonality:** Polyclonal**Tested Applications:** WB, IHC, IF/ICC, IP**Recommended dilutions:** Optimal dilutions/concentrations should be determined by the end user.**Immunogen:** KIR3DL2 (Pro184-Glu435)**Purification:** Antigen-specific affinity chromatography followed by Protein A affinity chromatography.**Form:** Liquid**Conjugation:** Unconjugated**Storage:** Store at 4 °C for frequent use. Aliquot and store at -20 °C for one year. Avoid repeated freeze/thaw cycles.**Buffer:** PBS, pH 7.4, containing 0.02% NaN₃, 50% glycerol.**Note:** This product is for research use only.