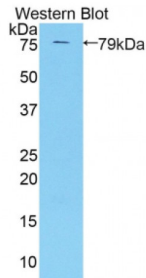


Killer Cell Immunoglobulin Like Receptor 3DL3 (KIR3DL3) Antibody

Catalogue No.: abx104485



Western blot analysis of the recombinant protein.

Polyclonal Antibody to Killer Cell Immunoglobulin Like Receptor 3DL3 (KIR3DL3).

Target:	Killer Cell Immunoglobulin Like Receptor 3DL3 (KIR3DL3)
Reactivity:	Human
Host:	Rabbit
Clonality:	Polyclonal
Tested Applications:	WB, IHC, IF/ICC, IP
Recommended dilutions:	Optimal dilutions/concentrations should be determined by the end user.
Immunogen:	KIR3DL3 (Asp147-Val410)
Purification:	Antigen-specific affinity chromatography followed by Protein A affinity chromatography.
Form:	Liquid
Conjugation:	Unconjugated
Storage:	Store at 4 °C for frequent use. Aliquot and store at -20 °C for one year. Avoid repeated freeze/thaw cycles.
Buffer:	PBS, pH 7.4, containing 0.02% NaN ₃ , 50% glycerol.
Note:	This product is for research use only.