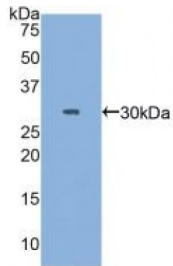
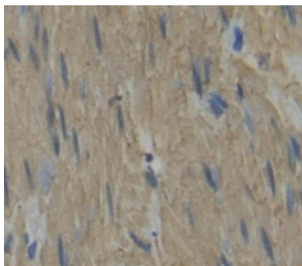


**Myosin Heavy Chain 3, Skeletal Muscle, Embryonic (MYH3) Antibody**

Catalogue No.: abx104486



Western blot analysis of recombinant Human MYH3.



IHC-P analysis of Human Tissue, with DAB staining.

Polyclonal Antibody to Myosin Heavy Chain 3, Skeletal Muscle, Embryonic (MYH3).

<b>Target:</b>	Myosin Heavy Chain 3, Skeletal Muscle, Embryonic (MYH3)
<b>Reactivity:</b>	Human
<b>Host:</b>	Rabbit
<b>Clonality:</b>	Polyclonal
<b>Tested Applications:</b>	WB, IHC, IF/ICC, IP
<b>Recommended dilutions:</b>	Optimal dilutions/concentrations should be determined by the end user.
<b>Immunogen:</b>	MYH3 (Glu1403-Arg1645)
<b>Purification:</b>	Antigen-specific affinity chromatography followed by Protein A affinity chromatography.
<b>Form:</b>	Liquid
<b>Conjugation:</b>	Unconjugated
<b>Storage:</b>	Store at 4 °C for frequent use. Aliquot and store at -20 °C for one year. Avoid repeated freeze/thaw cycles.

Abbexa Ltd, Innovation Centre, Cambridge Science Park, Cambridge, CB4 0EY, UK  
Telephone: +44 (0) 1223 755950 - Fax: +44 (0) 1223 755951 - E-Mail: [info@abbexa.com](mailto:info@abbexa.com)

**Swiss Prot:** [P11055](#)

**Buffer:** 0.01 M PBS, pH 7.4, containing 0.05% Proclin-300, 50% glycerol.

**Note:** This product is for research use only.