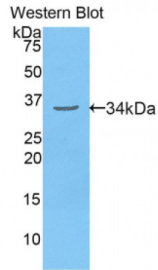
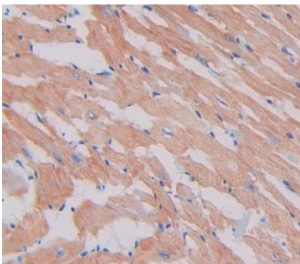


**Myosin Heavy Chain 3, Skeletal Muscle, Embryonic (MYH3) Antibody**

Catalogue No.: abx104487



Western blot analysis of the recombinant protein.



IHC-P analysis of Rat Tissue, with DAB staining.

Polyclonal Antibody to Myosin Heavy Chain 3, Skeletal Muscle, Embryonic (MYH3).

**Target:** Myosin Heavy Chain 3, Skeletal Muscle, Embryonic (MYH3)**Reactivity:** Rat**Host:** Rabbit**Clonality:** Polyclonal**Tested Applications:** WB, IHC, IF/ICC, IP**Recommended dilutions:** Optimal dilutions/concentrations should be determined by the end user.**Immunogen:** MYH3 (Arg1593-Val1848)**Purification:** Antigen-specific affinity chromatography followed by Protein A affinity chromatography.**Form:** Liquid**Conjugation:** Unconjugated**Storage:** Store at 4 °C for frequent use. Aliquot and store at -20 °C for one year. Avoid repeated freeze/thaw cycles.

Abbexa Ltd, Innovation Centre, Cambridge Science Park, Cambridge, CB4 0EY, UK  
Telephone: +44 (0) 1223 755950 - Fax: +44 (0) 1223 755951 - E-Mail: [info@abbexa.com](mailto:info@abbexa.com)

**Buffer:** PBS, pH 7.4, containing 0.02% NaN<sub>3</sub>, 50% glycerol.

**Note:** This product is for research use only.