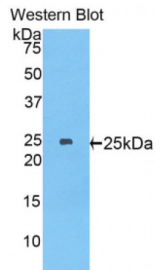


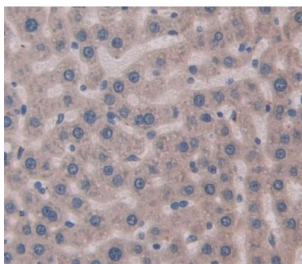
Abbexa Ltd, Innovation Centre, Cambridge Science Park, Cambridge, CB4 0EY, UK
Telephone: +44 (0) 1223 755950 - Fax: +44 (0) 1223 755951 - E-Mail: info@abbexa.com

Myosin Heavy Chain 8, Skeletal Muscle, Perinatal (MYH8) Antibody

Catalogue No.: abx104488



Western blot analysis of the recombinant protein.



IHC-P analysis of Rat Tissue, with DAB staining.

Polyclonal Antibody to Myosin Heavy Chain 8, Skeletal Muscle, Perinatal (MYH8).

Target:	Myosin Heavy Chain 8, Skeletal Muscle, Perinatal (MYH8)
Reactivity:	Rat
Host:	Rabbit
Clonality:	Polyclonal
Tested Applications:	WB, IHC, IF/ICC, IP
Recommended dilutions:	WB: 1/50 - 400, ICC: 1/50 - 500, IHC-F: 1/50 - 500, IHC-P: 1/10 - 100, ELISA: 1/100 - 200. Optimal dilutions/concentrations should be determined by the end user.
Immunogen:	MYH8 (His40-Val240)
Purification:	Antigen-specific affinity chromatography followed by Protein A affinity chromatography.
Form:	Liquid
Isotype:	IgG
Conjugation:	Unconjugated

Abbexa Ltd, Innovation Centre, Cambridge Science Park, Cambridge, CB4 0EY, UK
Telephone: +44 (0) 1223 755950 - Fax: +44 (0) 1223 755951 - E-Mail: info@abbexa.com

- Specificity:** The antibody is a rabbit polyclonal antibody raised against MYH8. It has been selected for its ability to recognize MYH8 in immunohistochemical staining and western blotting.
- Storage:** Store at 4 °C for frequent use. Aliquot and store at -20 °C for one year. Avoid repeated freeze/thaw cycles.
- Swiss Prot:** [P04462](#)
- Buffer:** PBS, pH 7.4, containing 0.02% NaN₃, 50% glycerol.
- Note:** This product is for research use only.