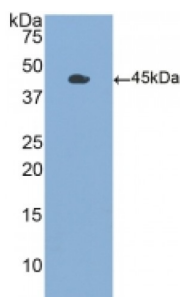


Abbexa Ltd, Innovation Centre, Cambridge Science Park, Cambridge, CB4 0EY, UK
Telephone: +44 (0) 1223 755950 - Fax: +44 (0) 1223 755951 - E-Mail: info@abbexa.com

Colony Stimulating Factor 2, Granulocyte Macrophage (GMCSF) Antibody

Catalogue No.: abx104579



Western blot analysis of recombinant Human GMCSF.

Polyclonal Antibody to CSF2 (CSF2).

Target:	Colony Stimulating Factor 2, Granulocyte Macrophage (GMCSF)
Reactivity:	Human
Host:	Rabbit
Clonality:	Polyclonal
Tested Applications:	WB, IHC, IF/ICC, IP
Recommended dilutions:	WB: 1/50 - 400, ICC: 1/50 - 500, IHC-F: 1/50 - 500, IHC-P: 1/10 - 100, ELISA: 1/100 - 1/5000. Optimal dilutions/concentrations should be determined by the end user.
Immunogen:	GMCSF (Ala18-Glu144)
Purification:	Antigen-specific affinity chromatography followed by Protein A affinity chromatography.
Form:	Liquid
Conjugation:	Unconjugated
Specificity:	The antibody is a rabbit polyclonal antibody raised against GMCSF. It has been selected for its ability to recognize GMCSF in immunohistochemical staining and western blotting.
Storage:	Store at 4 °C for frequent use. Aliquot and store at -20 °C for one year. Avoid repeated freeze/thaw cycles.
Swiss Prot:	P04141
Sequence:	The target protein is fused with two N-terminal Tags, His-tag and GST-tag expressed in E. coli.

Abbexa Ltd, Innovation Centre, Cambridge Science Park, Cambridge, CB4 0EY, UK
Telephone: +44 (0) 1223 755950 - Fax: +44 (0) 1223 755951 - E-Mail: info@abbexa.com

Buffer: 0.01 M PBS, pH 7.4, containing 0.05% Proclin-300, 50% glycerol.

Note: This product is for research use only.