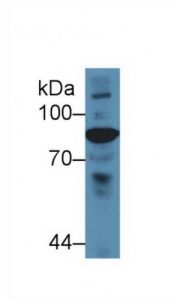
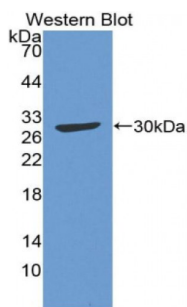


Complement Component 4 (C4) Antibody

Catalogue No.: abx104771



Western blot analysis of Chicken Serum, using Chicken C4 Antibody (5 µg/ml) and HRP-conjugated Goat Anti-Rabbit antibody ([abx400043](#), 0.2 µg/ml).



Western blot analysis of the recombinant protein.

Complement C4 Antibody is a Rabbit Polyclonal against Complement C4.

Target: Complement Component 4 (C4)

Reactivity: Chicken

Host: Rabbit

Clonality: Polyclonal

Tested Applications: WB, IHC, IF/ICC, IP

Recommended dilutions: WB: 0.5 - 5 µg/ml, IHC: 5 - 20 µg/ml, ICC: 5 - 20 µg/ml. Optimal dilutions/concentrations should be determined by the end user.

Immunogen: C4 (Leu1428-Gln1660)

Purification: Antigen-specific affinity chromatography followed by Protein A affinity chromatography.

Form: Liquid

Conjugation: Unconjugated

Storage: Store at 4 °C for frequent use. Aliquot and store at -20 °C for one year. Avoid repeated freeze/thaw cycles.

Abbexa Ltd, Innovation Centre, Cambridge Science Park, Cambridge, CB4 0EY, UK
Telephone: +44 (0) 1223 755950 - Fax: +44 (0) 1223 755951 - E-Mail: info@abbexa.com

Buffer: PBS, pH 7.4, containing 0.02% NaN₃, 50% glycerol.

Note: This product is for research use only.