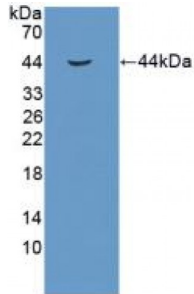


Abbexa Ltd, Innovation Centre, Cambridge Science Park, Cambridge, CB4 0EY, UK
Telephone: +44 (0) 1223 755950 - Fax: +44 (0) 1223 755951 - E-Mail: info@abbexa.com

Insulin Like Growth Factor 1 (IGF1) Antibody

Catalogue No.: abx104781



Western blot analysis of recombinant Chicken IGF1.

Insulin Like Growth Factor 1 (IGF1) Antibody is a Rabbit Polyclonal against Insulin Like Growth Factor 1 (IGF1).

Target: Insulin Like Growth Factor 1 (IGF1)

Reactivity: Chicken

Host: Rabbit

Clonality: Polyclonal

Tested Applications: WB, IHC, IF/ICC, IP

Recommended dilutions: Optimal dilutions/concentrations should be determined by the end user.

Immunogen: IGF1 (Ser28-Met153)

Purification: Antigen-specific affinity chromatography followed by Protein A affinity chromatography.

Form: Liquid

Conjugation: Unconjugated

Storage: Store at 4 °C for frequent use. Aliquot and store at -20 °C for one year. Avoid repeated freeze/thaw cycles.

Swiss Prot: [P18254](#)

Buffer: PBS, pH 7.4, containing 0.02% NaN₃, 50% glycerol.

Note: This product is for research use only.