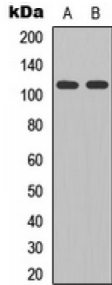


Glutamate Receptor Ionotropic, Delta-2 (GLURD2) Antibody

Catalogue No.: abx121406



Western blot analysis of GLURD2 expression in HEK293T (A), mouse brain (B) whole cell lysates.

Rabbit polyclonal antibody against GLURD2.

Target:	GLURD2
Reactivity:	Human, Mouse, Rat, Zebrafish
Host:	Rabbit
Clonality:	Polyclonal
Tested Applications:	WB, IF/ICC
Recommended dilutions:	WB: 1/500 - 1/1000, IF/ICC: 1/100 - 1/500. Optimal dilutions/concentrations should be determined by the end user.
Immunogen:	KLH-conjugated synthetic peptide encompassing a sequence within the C-term region of human GLURD2. The exact sequence is proprietary.
Purification:	The antibody was purified by immunogen affinity chromatography.
Conjugation:	Unconjugated
Storage:	Aliquot and store at -20 °C. Avoid repeated freeze/thaw cycles.
Swiss Prot:	O43424 Q61625 Q63226
GeneID:	2895 14804 79220
Buffer:	Liquid in 0.42% Potassium phosphate, 0.87% Sodium chloride, pH 7.3, 30% glycerol, and 0.01% sodium azide.
Note:	This product is for research use only.