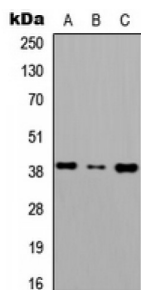


Abbexa Ltd, Innovation Centre, Cambridge Science Park, Cambridge, CB4 0EY, UK
Telephone: +44 (0) 1223 755950 - Fax: +44 (0) 1223 755951 - E-Mail: info@abbexa.com

C-X-C Chemokine Receptor Type 6 (CD186) Antibody

Catalogue No.: abx121571



Western blot analysis of CD186 expression in HEK293T (A), Raw264.7 (B), H9C2 (C) whole cell lysates.

Rabbit polyclonal antibody against CD186.

Target: CD186

Reactivity: Human, Mouse, Rat, Monkey

Host: Rabbit

Clonality: Polyclonal

Tested Applications: WB

Recommended dilutions: WB: 1/500 - 1/1000. Optimal dilutions/concentrations should be determined by the end user.

Immunogen: KLH-conjugated synthetic peptide encompassing a sequence within the N-term region of human CD186. The exact sequence is proprietary.

Purification: The antibody was purified by immunogen affinity chromatography.

Conjugation: Unconjugated

Storage: Aliquot and store at -20 °C. Avoid repeated freeze/thaw cycles.

Swiss Prot: [O00574](#) [Q9EQ16](#)

GeneID: [10663](#) [80901](#)

Buffer: Liquid in 0.42% Potassium phosphate, 0.87% Sodium chloride, pH 7.3, 30% glycerol, and 0.01% sodium azide.

Note: This product is for research use only.