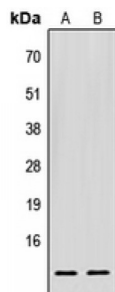


Abbexa Ltd, Innovation Centre, Cambridge Science Park, Cambridge, CB4 0EY, UK  
Telephone: +44 (0) 1223 755950 - Fax: +44 (0) 1223 755951 - E-Mail: [info@abbexa.com](mailto:info@abbexa.com)

## Eukaryotic Translation Initiation Factor 1 (EIF1) Antibody

Catalogue No.: abx121596



Western blot analysis of EIF1 expression in HEK293T (A), Raw264.7 (B) whole cell lysates.

Rabbit polyclonal antibody against EIF1.

**Target:** EIF1

**Reactivity:** Human, Mouse, Rat, Cow, Chicken, Monkey

**Host:** Rabbit

**Clonality:** Polyclonal

**Tested Applications:** WB

**Recommended dilutions:** WB: 1/500 - 1/1000. Optimal dilutions/concentrations should be determined by the end user.

**Immunogen:** KLH-conjugated synthetic peptide encompassing a sequence within the C-term region of human EIF1. The exact sequence is proprietary.

**Purification:** The antibody was purified by immunogen affinity chromatography.

**Conjugation:** Unconjugated

**Storage:** Aliquot and store at -20 °C. Avoid repeated freeze/thaw cycles.

**Swiss Prot:** [P41567](#) [P48024](#)

**GeneID:** [10209](#) [20918](#)

**Buffer:** Liquid in 0.42% Potassium phosphate, 0.87% Sodium chloride, pH 7.3, 30% glycerol, and 0.01% sodium azide.

**Note:** This product is for research use only.