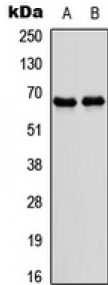


Nuclear Receptor Subfamily 4 Group A Member 3 (NR4A3) Antibody

Catalogue No.: abx121651



Western blot analysis of NR4A3 expression in IMR32 (A), rat skeletal muscle (B) whole cell lysates.

Rabbit polyclonal antibody against NR4A3.

Target: NR4A3

Reactivity: Human, Rat, Monkey, Pig

Host: Rabbit

Clonality: Polyclonal

Tested Applications: WB

Recommended dilutions: WB: 1/500 - 1/1000. Optimal dilutions/concentrations should be determined by the end user.

Immunogen: KLH-conjugated synthetic peptide encompassing a sequence within the center region of human NR4A3. The exact sequence is proprietary.

Purification: The antibody was purified by immunogen affinity chromatography.

Conjugation: Unconjugated

Storage: Aliquot and store at -20 °C. Avoid repeated freeze/thaw cycles.

Swiss Prot: [Q92570](#) [Q9QZB6](#) [P51179](#)

GeneID: [8013](#) [18124](#) [58853](#)

Buffer: Liquid in 0.42% Potassium phosphate, 0.87% Sodium chloride, pH 7.3, 30% glycerol, and 0.01% sodium azide.

Note: This product is for research use only.