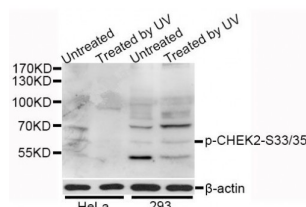


Abbexa Ltd, Innovation Centre, Cambridge Science Park, Cambridge, CB4 0EY, UK  
Telephone: +44 (0) 1223 755950 - Fax: +44 (0) 1223 755951 - E-Mail: [info@abbexa.com](mailto:info@abbexa.com)

## CHEK2 (pS33 / 35) Antibody

Catalogue No.: abx123309



Western blot analysis of extracts of HeLa and 293 cells, using Phospho-CHEK2-S33/35 antibody (abx123309) at 1/1000 dilution. HeLa cells were treated by UV for 15-30 minutes. 293 cells were treated by UV for 15-30 minutes.

CHEK2 (pS33/35) Antibody is a Rabbit Polyclonal Antibody against CHEK2 (pS33/35).

**Target:** CHEK2 (pS33/35)

**Reactivity:** Human

**Host:** Rabbit

**Modification:** Phosphorylation

**Clonality:** Polyclonal

**Tested Applications:** WB

**Recommended dilutions:** WB: 1/500 - 1/2000. Optimal dilutions/concentrations should be determined by the end user.

**Purification:** Affinity purified.

**Form:** Liquid

**Isotype:** IgG

**Conjugation:** Unconjugated

**Storage:** Aliquot and store at -20 °C. Avoid repeated freeze/thaw cycles.

**Molecular Weight:** Calculated MW: 15-38 kDa/50-65 kDa  
Observed MW: 61 kDa

**Swiss Prot:** [Q96017](#)

**GeneID:** [11200](#)

Abbexa Ltd, Innovation Centre, Cambridge Science Park, Cambridge, CB4 0EY, UK  
Telephone: +44 (0) 1223 755950 - Fax: +44 (0) 1223 755951 - E-Mail: [info@abbexa.com](mailto:info@abbexa.com)

**Gene Symbol:** CHEK2

**Concentration:** > 1 mg/ml

**Buffer:** PBS, pH 7.3, 0.02% sodium azide, 50% glycerol.

**Note:** This product is for research use only.