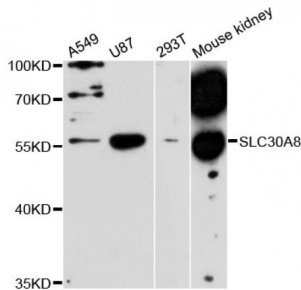


Abbexa Ltd, Innovation Centre, Cambridge Science Park, Cambridge, CB4 0EY, UK
Telephone: +44 (0) 1223 755950 - Fax: +44 (0) 1223 755951 - E-Mail: info@abbexa.com

Zinc Transporter 8 (SLC30A8) Antibody

Catalogue No.: abx123724



Western blot analysis of extracts of various cell lines, using SLC30A8 antibody (abx123724) at 1:3000 dilution.

SLC30A8 Antibody is a Rabbit Polyclonal Antibody against SLC30A8.

Target: SLC30A8

Reactivity: Human, Mouse

Host: Rabbit

Clonality: Polyclonal

Tested Applications: WB

Recommended dilutions: WB: 1/500 - 1/2000. Optimal dilutions/concentrations should be determined by the end user.

Immunogen: The immunogen used to raise this antibody has a length of 369 amino acids.

Purification: Affinity purified.

Form: Liquid

Isotype: IgG

Conjugation: Unconjugated

Storage: Aliquot and store at -20 °C. Avoid repeated freeze/thaw cycles.

Molecular Weight: Calculated MW: 35 kDa/40 kDa
Observed MW: 56 kDa

GeneID: [169026](#)

Gene Symbol: SLC30A8

Abbexa Ltd, Innovation Centre, Cambridge Science Park, Cambridge, CB4 0EY, UK
Telephone: +44 (0) 1223 755950 - Fax: +44 (0) 1223 755951 - E-Mail: info@abbexa.com

Concentration: > 1 mg/ml

Buffer: PBS, pH 7.3, 0.02% sodium azide, 50% glycerol.

Note: This product is for research use only.