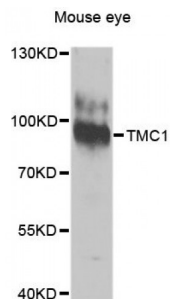


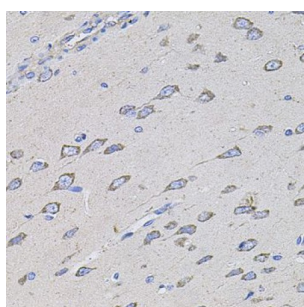
Abbexa Ltd, Innovation Centre, Cambridge Science Park, Cambridge, CB4 0EY, UK
Telephone: +44 (0) 1223 755950 - Fax: +44 (0) 1223 755951 - E-Mail: info@abbexa.com

Transmembrane Channel-Like Protein 1 (TMC1) Antibody

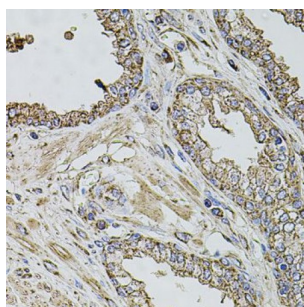
Catalogue No.: abx124060



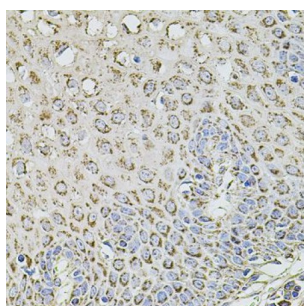
Western blot analysis of extracts of mouse eye, using TMC1 antibody (abx124060) at 1/1000 dilution.



Immunohistochemistry of paraffin-embedded rat brain using TMC1 antibody (abx124060) at dilution of 1/100 (40x lens).



Immunohistochemistry of paraffin-embedded human prostate using TMC1 antibody (abx124060) at dilution of 1/100 (40x lens).



Immunohistochemistry of paraffin-embedded human esophagus using TMC1 antibody (abx124060) at dilution of 1/100 (40x lens).

TMC1 Antibody is a Rabbit Polyclonal Antibody against TMC1.

Target: TMC1

Reactivity: Human, Mouse, Rat

Host: Rabbit

Abbexa Ltd, Innovation Centre, Cambridge Science Park, Cambridge, CB4 0EY, UK
Telephone: +44 (0) 1223 755950 - Fax: +44 (0) 1223 755951 - E-Mail: info@abbexa.com

Clonality: Polyclonal

Tested Applications: WB, IHC

Recommended dilutions: WB: 1/500 - 1/2000, IHC: 1/50 - 1/200. Optimal dilutions/concentrations should be determined by the end user.

Immunogen: The immunogen used to raise this antibody has a length of 760 amino acids.

Purification: Affinity purified.

Form: Liquid

Isotype: IgG

Conjugation: Unconjugated

Storage: Aliquot and store at -20 °C. Avoid repeated freeze/thaw cycles.

Molecular Weight: Calculated MW: 87 kDa
Observed MW: 88 kDa

Swiss Prot: [Q8TDI8](#)

GeneID: [117531](#)

Gene Symbol: TMC1

Concentration: > 1 mg/ml

Buffer: PBS, pH 7.3, 0.02% sodium azide, 50% glycerol.

Note: This product is for research use only.