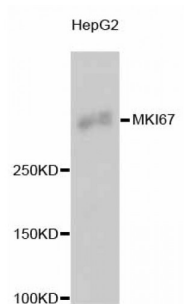


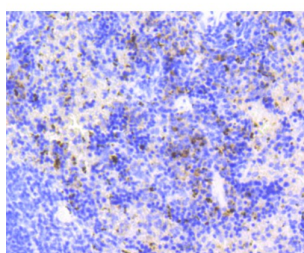
Abbexa Ltd, Innovation Centre, Cambridge Science Park, Cambridge, CB4 0EY, UK
Telephone: +44 (0) 1223 755950 - Fax: +44 (0) 1223 755951 - E-Mail: info@abbexa.com

Antigen KI-67 (MKI67) Antibody

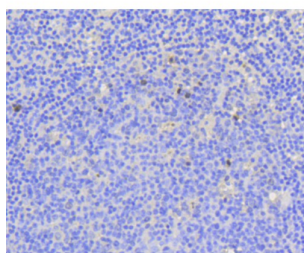
Catalogue No.: abx125367



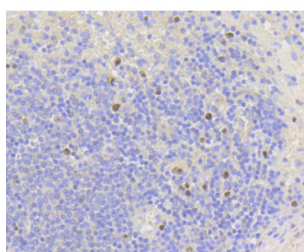
Western blot analysis of extracts of HepG2 cells, using MKI67 antibody (abx125367).



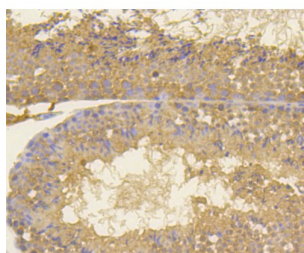
Immunohistochemistry of paraffin-embedded mouse spleen using MKI67 antibody (abx125367) at dilution of 1/100 (40x lens).



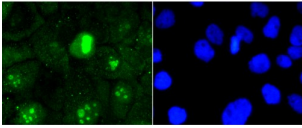
Immunohistochemistry of paraffin-embedded human tonsil using MKI67 antibody (abx125367) at dilution of 1/100 (40x lens).



Immunohistochemistry of paraffin-embedded human spleen using MKI67 antibody (abx125367) at dilution of 1/100 (40x lens).



Immunohistochemistry of paraffin-embedded mouse testis using MKI67 antibody (abx125367) at dilution of 1/100 (40x lens).



Immunofluorescence analysis of A431 cells using MKI67 antibody (abx125367).

MKI67 Antibody is a Rabbit Monoclonal against MKI67.

Target:	MKI67
Reactivity:	Human, Mouse
Host:	Rabbit
Clonality:	Monoclonal
Tested Applications:	WB, IHC, IF/ICC
Recommended dilutions:	WB: 1/500 - 1/2000, IHC: 1/50 - 1/200, IF/ICC: 1/50 - 1/200. Optimal dilutions/concentrations should be determined by the end user.
Purification:	Affinity purified.
Form:	Liquid
Isotype:	IgG
Conjugation:	Unconjugated
Storage:	Aliquot and store at -20 °C. Avoid repeated freeze/thaw cycles.
Molecular Weight:	Calculated MW: 319 kDa/358 kDa Observed MW: 359 kDa
Swiss Prot:	P46013
GeneID:	4288
Gene Symbol:	MKI67
Concentration:	> 1 mg/ml

Abbexa Ltd, Innovation Centre, Cambridge Science Park, Cambridge, CB4 0EY, UK
Telephone: +44 (0) 1223 755950 - Fax: +44 (0) 1223 755951 - E-Mail: info@abbexa.com

Buffer: PBS, pH 7.3, 0.02% sodium azide, 50% glycerol.

Note: This product is for research use only.