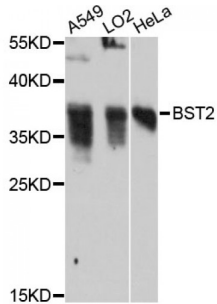


Abbexa Ltd, Innovation Centre, Cambridge Science Park, Cambridge, CB4 0EY, UK
Telephone: +44 (0) 1223 755950 - Fax: +44 (0) 1223 755951 - E-Mail: info@abbexa.com

Bone Marrow Stromal Antigen 2 (BST2) Antibody

Catalogue No.: abx125580



Western blot analysis of extracts of various cell lines, using BST2 antibody (abx125580) at 1:3000 dilution.

BST2 Antibody is a Rabbit Polyclonal against BST2.

Target: BST2

Reactivity: Human

Host: Rabbit

Clonality: Polyclonal

Tested Applications: WB

Recommended dilutions: WB: 1/500 - 1/2000. Optimal dilutions/concentrations should be determined by the end user.

Purification: Affinity purified.

Form: Liquid

Isotype: IgG

Conjugation: Unconjugated

Storage: Aliquot and store at -20 °C. Avoid repeated freeze/thaw cycles.

Molecular Weight: Calculated MW: 18 kDa/19 kDa
Observed MW: 37 kDa

GeneID: [684](#)

Gene Symbol: BST2

Concentration: > 1 mg/ml

Abbexa Ltd, Innovation Centre, Cambridge Science Park, Cambridge, CB4 0EY, UK
Telephone: +44 (0) 1223 755950 - Fax: +44 (0) 1223 755951 - E-Mail: info@abbexa.com

Buffer: PBS, pH 7.3, 0.02% sodium azide, 50% glycerol.

Note: This product is for research use only.