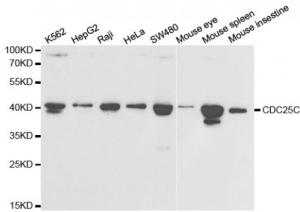


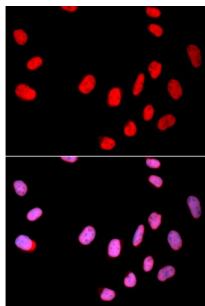
Abbexa Ltd, Innovation Centre, Cambridge Science Park, Cambridge, CB4 0EY, UK  
 Telephone: +44 (0) 1223 755950 - Fax: +44 (0) 1223 755951 - E-Mail: info@abbexa.com

## Cell Division Cycle 25C (CDC25C) Antibody

Catalogue No.: abx125641



Western blot analysis of extracts of various cell lines, using CDC25C antibody (abx125641) at 1/1000 dilution.



Immunofluorescence analysis of U2OS cells using CDC25C antibody (abx125641). Blue: DAPI for nuclear staining.

CDC25C Antibody is a Rabbit Polyclonal against CDC25C.

**Target:** CDC25C

**Reactivity:** Human, Mouse

**Host:** Rabbit

**Clonality:** Polyclonal

**Tested Applications:** WB, IF/ICC

**Recommended dilutions:** WB: 1/500 - 1/2000, IF/ICC: 1/50 - 1/200. Optimal dilutions/concentrations should be determined by the end user.

**Purification:** Affinity purified.

**Form:** Liquid

**Isotype:** IgG

**Conjugation:** Unconjugated

**Storage:** Aliquot and store at -20 °C. Avoid repeated freeze/thaw cycles.

Abbexa Ltd, Innovation Centre, Cambridge Science Park, Cambridge, CB4 0EY, UK  
Telephone: +44 (0) 1223 755950 - Fax: +44 (0) 1223 755951 - E-Mail: [info@abbexa.com](mailto:info@abbexa.com)

**Molecular Weight:** Calculated MW: 45 kDa/48 kDa/50 kDa/53 kDa  
Observed MW: 40 kDa

**Swiss Prot:** [P30307](#)

**GeneID:** [995](#)

**Gene Symbol:** CDC25C

**Concentration:** > 1 mg/ml

**Buffer:** PBS, pH 7.3, 0.02% sodium azide, 50% glycerol.

**Note:** This product is for research use only.