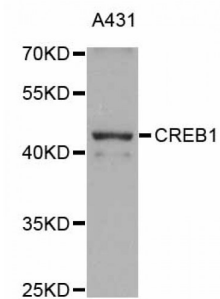


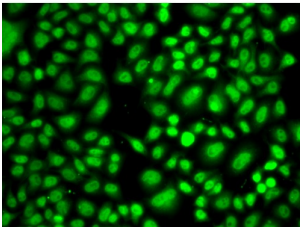
Abbexa Ltd, Innovation Centre, Cambridge Science Park, Cambridge, CB4 0EY, UK
Telephone: +44 (0) 1223 755950 - Fax: +44 (0) 1223 755951 - E-Mail: info@abbexa.com

cAMP Responsive Element Binding Protein 1 (CREB1) Antibody

Catalogue No.: abx125715



Western blot analysis of extracts of A-431 cells, using CREB1 antibody (abx125715) at 1/1000 dilution.



Immunofluorescence analysis of A549 cells using CREB1 antibody (abx125715) at dilution of 1/100 (40x lens). Blue: DAPI for nuclear staining.

CREB1 Antibody is a Rabbit Polyclonal against CREB1.

Target: CREB1

Reactivity: Human

Host: Rabbit

Clonality: Polyclonal

Tested Applications: WB, IF/ICC

Recommended dilutions: WB: 1/500 - 1/2000, IF/ICC: 1/50 - 1/100. Optimal dilutions/concentrations should be determined by the end user.

Purification: Affinity purified.

Form: Liquid

Isotype: IgG

Conjugation: Unconjugated

Storage: Aliquot and store at -20 °C. Avoid repeated freeze/thaw cycles.

Abbexa Ltd, Innovation Centre, Cambridge Science Park, Cambridge, CB4 0EY, UK
Telephone: +44 (0) 1223 755950 - Fax: +44 (0) 1223 755951 - E-Mail: info@abbexa.com

Molecular Weight: Calculated MW: 25 kDa/35 kDa/36 kDa
Observed MW: 43 kDa

Swiss Prot: [P16220](#)

GeneID: [1385](#)

Gene Symbol: CREB1

Concentration: > 1 mg/ml

Buffer: PBS, pH 7.3, 0.02% sodium azide, 50% glycerol.

Note: This product is for research use only.