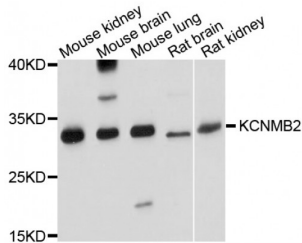


Abbexa Ltd, Innovation Centre, Cambridge Science Park, Cambridge, CB4 0EY, UK  
 Telephone: +44 (0) 1223 755950 - Fax: +44 (0) 1223 755951 - E-Mail: info@abbexa.com

## Potassium Calcium-Activated Channel Subfamily M Regulatory Beta Subunit 2 (KCNMB2) Antibody

Catalogue No.: abx126041



Western blot analysis of extracts of various cell lines, using KCNMB2 antibody (abx126041) at 1/1000 dilution.

KCNMB2 Antibody is a Rabbit Polyclonal against KCNMB2.

**Target:** KCNMB2

**Reactivity:** Mouse, Rat

**Host:** Rabbit

**Clonality:** Polyclonal

**Tested Applications:** WB

**Recommended dilutions:** WB: 1/500 - 1/2000. Optimal dilutions/concentrations should be determined by the end user.

**Purification:** Affinity purified.

**Form:** Liquid

**Isotype:** IgG

**Conjugation:** Unconjugated

**Storage:** Aliquot and store at -20 °C. Avoid repeated freeze/thaw cycles.

**Molecular Weight:** Calculated MW: 27 kDa  
 Observed MW: 30 kDa

**Swiss Prot:** [Q9Y691](#)

**GeneID:** [10242](#)

**Gene Symbol:** KCNMB2

Abbexa Ltd, Innovation Centre, Cambridge Science Park, Cambridge, CB4 0EY, UK  
Telephone: +44 (0) 1223 755950 - Fax: +44 (0) 1223 755951 - E-Mail: [info@abbexa.com](mailto:info@abbexa.com)

**Concentration:** > 1 mg/ml

**Buffer:** PBS, pH 7.3, 0.02% sodium azide, 50% glycerol.

**Note:** This product is for research use only.