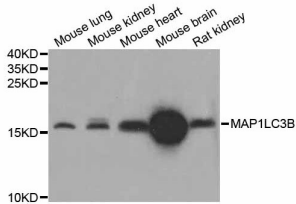


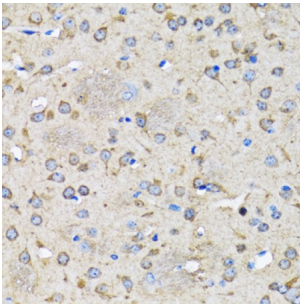
Abbexa Ltd, Innovation Centre, Cambridge Science Park, Cambridge, CB4 0EY, UK  
Telephone: +44 (0) 1223 755950 - Fax: +44 (0) 1223 755951 - E-Mail: info@abbexa.com

## Microtubule-Associated Proteins 1A/1B Light Chain 3B (MAP1LC3B) Antibody

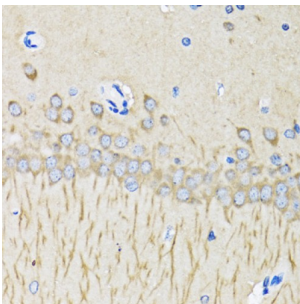
Catalogue No.: abx126116



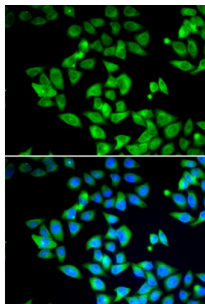
Western blot analysis of extracts of various cell lines, using MAP1LC3B antibody (abx126116) at 1/1000 dilution.



Immunohistochemistry of paraffin-embedded rat brain using MAP1LC3B antibody (abx126116) at dilution of 1/100 (40x lens).



Immunohistochemistry of paraffin-embedded mouse brain using MAP1LC3B antibody (abx126116) at dilution of 1/100 (40x lens).



Immunofluorescence analysis of U2OS cells using MAP1LC3B antibody (abx126116). Blue: DAPI for nuclear staining.

MAP1LC3B Antibody is a Rabbit Polyclonal against MAP1LC3B.

**Target:** MAP1LC3B

**Reactivity:** Human, Mouse, Rat

Abbexa Ltd, Innovation Centre, Cambridge Science Park, Cambridge, CB4 0EY, UK  
Telephone: +44 (0) 1223 755950 - Fax: +44 (0) 1223 755951 - E-Mail: [info@abbexa.com](mailto:info@abbexa.com)

<b>Host:</b>	Rabbit
<b>Clonality:</b>	Polyclonal
<b>Tested Applications:</b>	WB, IHC, IF/ICC
<b>Recommended dilutions:</b>	WB: 1/500 - 1/2000, IHC: 1/50 - 1/200, IF/ICC: 1/50 - 1/200. Optimal dilutions/concentrations should be determined by the end user.
<b>Purification:</b>	Affinity purified.
<b>Form:</b>	Liquid
<b>Isotype:</b>	IgG
<b>Conjugation:</b>	Unconjugated
<b>Storage:</b>	Aliquot and store at -20 °C. Avoid repeated freeze/thaw cycles.
<b>Molecular Weight:</b>	Calculated MW: 14 kDa Observed MW: 16 kDa
<b>Swiss Prot:</b>	<a href="#">Q9GZQ8</a>
<b>GeneID:</b>	<a href="#">81631</a>
<b>Gene Symbol:</b>	MAP1LC3B
<b>Concentration:</b>	> 1 mg/ml
<b>Buffer:</b>	PBS, pH 7.3, 0.02% sodium azide, 50% glycerol.
<b>Note:</b>	This product is for research use only.