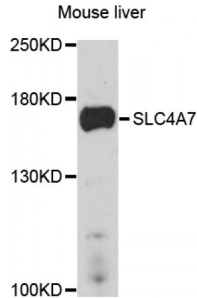


Abbexa Ltd, Innovation Centre, Cambridge Science Park, Cambridge, CB4 0EY, UK
Telephone: +44 (0) 1223 755950 - Fax: +44 (0) 1223 755951 - E-Mail: info@abbexa.com

Solute Carrier Family 4 Member 7 (SLC4A7) Antibody

Catalogue No.: abx126585



Western blot analysis of extracts of mouse liver, using SLC4A7 antibody (abx126585) at 1/1000 dilution.

SLC4A7 Antibody is a Rabbit Polyclonal against SLC4A7.

Target: SLC4A7

Reactivity: Human, Mouse

Host: Rabbit

Clonality: Polyclonal

Tested Applications: WB

Recommended dilutions: WB: 1/500 - 1/2000. Optimal dilutions/concentrations should be determined by the end user.

Purification: Affinity purified.

Form: Liquid

Isotype: IgG

Conjugation: Unconjugated

Storage: Aliquot and store at -20 °C. Avoid repeated freeze/thaw cycles.

Molecular Weight: Calculated MW: 52 kDa/63 kDa/89 kDa/112-140 kDa
Observed MW: 160 kDa

Swiss Prot: [Q9Y6M7](#)

GenID: [9497](#)

Gene Symbol: SLC4A7

Abbexa Ltd, Innovation Centre, Cambridge Science Park, Cambridge, CB4 0EY, UK
Telephone: +44 (0) 1223 755950 - Fax: +44 (0) 1223 755951 - E-Mail: info@abbexa.com

Concentration: > 1 mg/ml

Buffer: PBS, pH 7.3, 0.02% sodium azide, 50% glycerol.

Note: This product is for research use only.