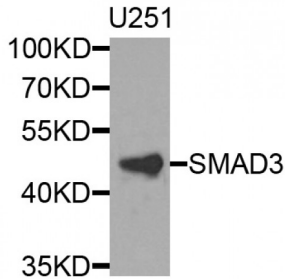


Abbexa Ltd, Innovation Centre, Cambridge Science Park, Cambridge, CB4 0EY, UK
Telephone: +44 (0) 1223 755950 - Fax: +44 (0) 1223 755951 - E-Mail: info@abbexa.com

Mothers Against Decapentaplegic Homolog 3 (SMAD3) Antibody

Catalogue No.: abx126598



Western blot analysis of extracts of U-251MG cells, using SMAD3 antibody (abx126598) at 1/1000 dilution.

SMAD3 Antibody is a Rabbit Polyclonal against SMAD3.

Target: SMAD3

Reactivity: Human, Mouse

Host: Rabbit

Clonality: Polyclonal

Tested Applications: WB

Recommended dilutions: WB: 1/500 - 1/2000. Optimal dilutions/concentrations should be determined by the end user.

Purification: Affinity purified.

Form: Liquid

Isotype: IgG

Conjugation: Unconjugated

Storage: Aliquot and store at -20 °C. Avoid repeated freeze/thaw cycles.

Molecular Weight: Calculated MW: 25 kDa/35 kDa/43 kDa/48 kDa
Observed MW: 48 kDa

Swiss Prot: [P84022](#)

GeneID: [4088](#)

Gene Symbol: SMAD3

Abbexa Ltd, Innovation Centre, Cambridge Science Park, Cambridge, CB4 0EY, UK
Telephone: +44 (0) 1223 755950 - Fax: +44 (0) 1223 755951 - E-Mail: info@abbexa.com

Concentration: > 1 mg/ml

Buffer: PBS, pH 7.3, 0.02% sodium azide, 50% glycerol.

Note: This product is for research use only.