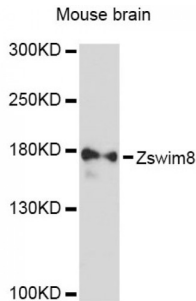


Abbexa Ltd, Innovation Centre, Cambridge Science Park, Cambridge, CB4 0EY, UK
 Telephone: +44 (0) 1223 755950 - Fax: +44 (0) 1223 755951 - E-Mail: info@abbexa.com

Zinc Finger SWIM Domain-Containing Protein 8 (Zswim8) Antibody

Catalogue No.: abx126815



Western blot analysis of extracts of mouse brain, using Zswim8 Antibody (abx126815) at 1:3000 dilution.

Zswim8 Antibody is a Rabbit Polyclonal against Zswim8.

Target: Zswim8

Reactivity: Mouse

Host: Rabbit

Clonality: Polyclonal

Tested Applications: WB

Recommended dilutions: WB: 1/500 - 1/2000. Optimal dilutions/concentrations should be determined by the end user.

Purification: Affinity purified.

Form: Liquid

Isotype: IgG

Conjugation: Unconjugated

Storage: Aliquot and store at -20 °C. Avoid repeated freeze/thaw cycles.

Molecular Weight: Calculated MW: 70 kDa/88 kDa/193 kDa/196 kDa/197 kDa
 Observed MW: 190 kDa

Swiss Prot: [Q3UHH1](#)

GenID: [268721](#)

Gene Symbol: Zswim8

Abbexa Ltd, Innovation Centre, Cambridge Science Park, Cambridge, CB4 0EY, UK
Telephone: +44 (0) 1223 755950 - Fax: +44 (0) 1223 755951 - E-Mail: info@abbexa.com

Concentration: > 1 mg/ml

Buffer: PBS, pH 7.3, 0.02% sodium azide, 50% glycerol.

Note: This product is for research use only.