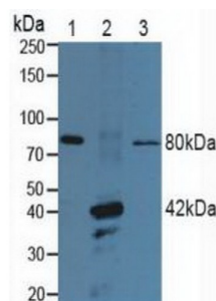


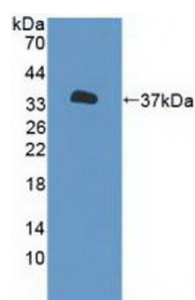
Abbexa Ltd, Innovation Centre, Cambridge Science Park, Cambridge, CB4 0EY, UK
Telephone: +44 (0) 1223 755950 - Fax: +44 (0) 1223 755951 - E-Mail: info@abbexa.com

Purinergic Receptor P2X, Ligand Gated Ion Channel 7 (P2RX7) Antibody

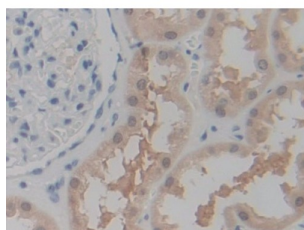
Catalogue No.: abx128180



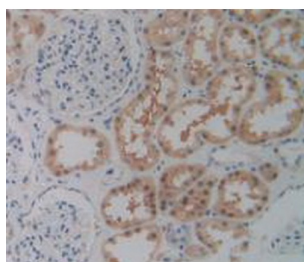
Western blot analysis of (1) Porcine Brain Tissue, (2) Porcine Stomach Tissue and (3) Porcine Heart Tissue.



Western blot analysis of recombinant Human P2RX7.



IHC-P analysis of Human Kidney Tissue, with DAB staining.



IHC-P analysis of Human Kidney Tissue, with DAB staining.

Purinergic Receptor P2X, Ligand Gated Ion Channel 7 Antibody is a Rabbit Polyclonal against Purinergic Receptor P2X, Ligand Gated Ion Channel 7.

Target: Purinergic Receptor P2X, Ligand Gated Ion Channel 7 (P2RX7)

Reactivity: Human

Abbexa Ltd, Innovation Centre, Cambridge Science Park, Cambridge, CB4 0EY, UK
Telephone: +44 (0) 1223 755950 - Fax: +44 (0) 1223 755951 - E-Mail: info@abbexa.com

Host: Rabbit

Clonality: Polyclonal

Tested Applications: WB, IHC, IF/ICC, IP

Recommended dilutions: Optimal dilutions/concentrations should be determined by the end user.

Immunogen: P2RX7 (Ser47-Val334)

Purification: Antigen-specific affinity chromatography followed by Protein A affinity chromatography.

Form: Liquid

Conjugation: Unconjugated

Storage: Store at 4 °C for frequent use. Aliquot and store at -20 °C for one year. Avoid repeated freeze/thaw cycles.

Swiss Prot: [Q99572](#)

Buffer: 0.01 M PBS, pH 7.4, containing 0.05% Proclin-300, 50% glycerol.

Note: This product is for research use only.