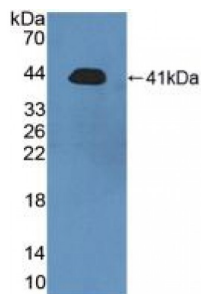


Abbexa Ltd, Innovation Centre, Cambridge Science Park, Cambridge, CB4 0EY, UK
Telephone: +44 (0) 1223 755950 - Fax: +44 (0) 1223 755951 - E-Mail: info@abbexa.com

Acidic Salivary Proline Rich Phosphoprotein 2 (PRH2) Antibody

Catalogue No.: abx128293



Western blot analysis of recombinant Human PRH2.

Acidic Salivary Proline Rich Phosphoprotein 2 Antibody is a Rabbit Polyclonal against Acidic Salivary Proline Rich Phosphoprotein 2.

Target: Acidic Salivary Proline Rich Phosphoprotein 2 (PRH2)

Reactivity: Human

Host: Rabbit

Clonality: Polyclonal

Tested Applications: WB, IHC, IF/ICC, IP

Recommended dilutions: Optimal dilutions/concentrations should be determined by the end user.

Immunogen: PRH2 (Asp17-Gln166)

Purification: Antigen-specific affinity chromatography followed by Protein A affinity chromatography.

Form: Liquid

Conjugation: Unconjugated

Storage: Store at 4 °C for frequent use. Aliquot and store at -20 °C for one year. Avoid repeated freeze/thaw cycles.

Swiss Prot: [P02810](#)

Buffer: 0.01 M PBS, pH 7.4, containing 0.05% Proclin-300, 50% glycerol.

Note: This product is for research use only.