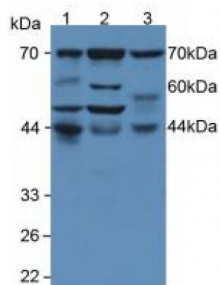


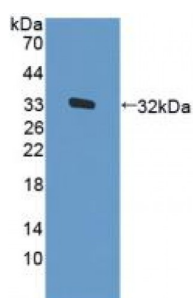
Abbexa Ltd, Innovation Centre, Cambridge Science Park, Cambridge, CB4 0EY, UK
Telephone: +44 (0) 1223 755950 - Fax: +44 (0) 1223 755951 - E-Mail: info@abbexa.com

Protein Kinase R (PKR) Antibody

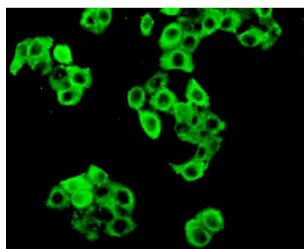
Catalogue No.: abx128520



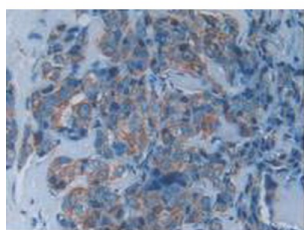
Western blot analysis of (1) Human MCF7 Cells, (2) Human HeLa cells and (3) Human Jurkat Cells.



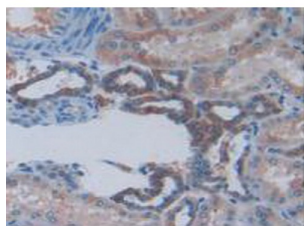
Western blot analysis of recombinant Human PKR.



IHC-P analysis of MCF7 cells, with FITC staining.

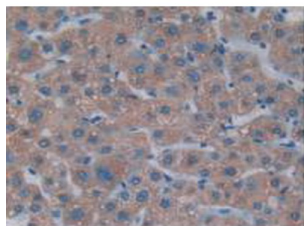


IHC-P analysis of Human Breast Tissue, with DAB staining.



IHC-P analysis of Human Kidney Tissue, with DAB staining.

Abbexa Ltd, Innovation Centre, Cambridge Science Park, Cambridge, CB4 0EY, UK
Telephone: +44 (0) 1223 755950 - Fax: +44 (0) 1223 755951 - E-Mail: info@abbexa.com



IHC-P analysis of Human Liver Tissue, with DAB staining.

Protein Kinase R Antibody is a Rabbit Polyclonal against Protein Kinase R.

Target: Protein Kinase R (PKR)

Reactivity: Human

Host: Rabbit

Clonality: Polyclonal

Tested Applications: WB, IHC, IF/ICC, IP

Recommended dilutions: Optimal dilutions/concentrations should be determined by the end user.

Immunogen: PKR (Ser224-Ile502)

Purification: Antigen-specific affinity chromatography followed by Protein A affinity chromatography.

Form: Liquid

Conjugation: Unconjugated

Storage: Store at 4 °C for frequent use. Aliquot and store at -20 °C for one year. Avoid repeated freeze/thaw cycles.

Swiss Prot: [P19525](#)

Buffer: 0.01 M PBS, pH 7.4, containing 0.05% Proclin-300, 50% glycerol.

Note: This product is for research use only.