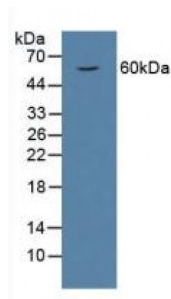


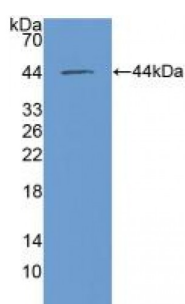
Abbexa Ltd, Innovation Centre, Cambridge Science Park, Cambridge, CB4 0EY, UK
Telephone: +44 (0) 1223 755950 - Fax: +44 (0) 1223 755951 - E-Mail: info@abbexa.com

Macrophage Migration Inhibitory Factor (MIF) Antibody

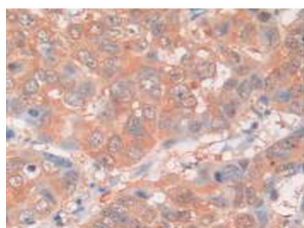
Catalogue No.: abx128725



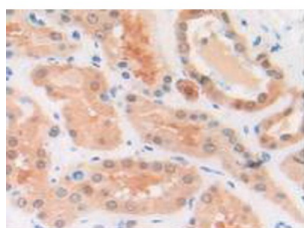
Western blot analysis of (1) Human Jurkat Cells, (2) Mouse Spleen Tissue, (3) Human U-937 Cells and (4) Mouse Brain Tissue.



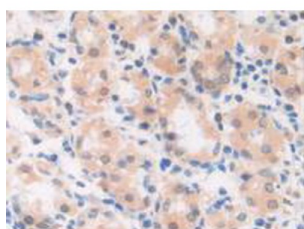
Western blot analysis of recombinant Human MIF.



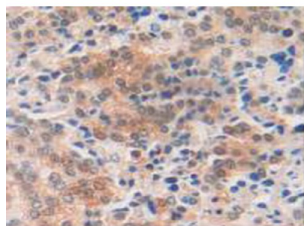
IHC-P analysis of Human Breast Cancer Tissue, with DAB staining.



IHC-P analysis of Human Kidney Tissue, with DAB staining.



IHC-P analysis of Human Stomach Tissue, with DAB staining.



IHC-P analysis of Human Prostate Gland Cancer Tissue, with DAB staining.

Macrophage Migration Inhibitory Factor Antibody is a Rabbit Polyclonal against Macrophage Migration Inhibitory Factor.

Target: Macrophage Migration Inhibitory Factor (MIF)

Reactivity: Human

Host: Rabbit

Clonality: Polyclonal

Tested Applications: WB, IHC, IF/ICC, IP

Recommended dilutions: Optimal dilutions/concentrations should be determined by the end user.

Immunogen: MIF (Met3-Asn111)

Purification: Antigen-specific affinity chromatography followed by Protein A affinity chromatography.

Form: Liquid

Conjugation: Unconjugated

Storage: Store at 4 °C for frequent use. Aliquot and store at -20 °C for one year. Avoid repeated freeze/thaw cycles.

Swiss Prot: [P14174](#)

Buffer: 0.01 M PBS, pH 7.4, containing 0.05% Proclin-300, 50% glycerol.

Note: This product is for research use only.