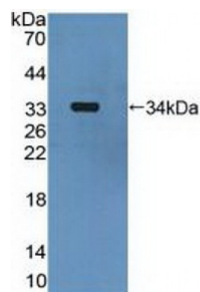


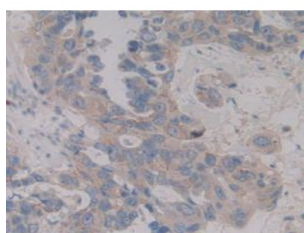
Abbexa Ltd, Innovation Centre, Cambridge Science Park, Cambridge, CB4 0EY, UK
Telephone: +44 (0) 1223 755950 - Fax: +44 (0) 1223 755951 - E-Mail: info@abbexa.com

Mitogen Activated Protein Kinase Kinase 6 (MAP2K6) Antibody

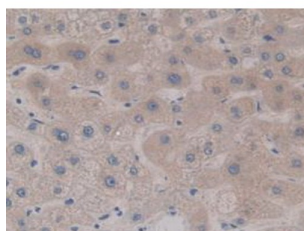
Catalogue No.: abx128806



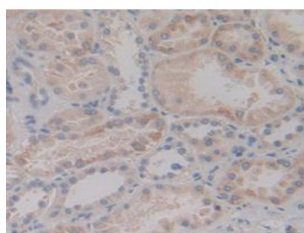
Western blot analysis of recombinant Human MAP2K6.



IHC-P analysis of Human Breast Cancer Tissue, with DAB staining.



IHC-P analysis of Human Liver Tissue, with DAB staining.



IHC-P analysis of Human Kidney Tissue, with DAB staining.

Mitogen Activated Protein Kinase Kinase 6 Antibody is a Rabbit Polyclonal against Mitogen Activated Protein Kinase Kinase 6.

Target: Mitogen Activated Protein Kinase Kinase 6 (MAP2K6)

Reactivity: Human

Host: Rabbit

Abbexa Ltd, Innovation Centre, Cambridge Science Park, Cambridge, CB4 0EY, UK
Telephone: +44 (0) 1223 755950 - Fax: +44 (0) 1223 755951 - E-Mail: info@abbexa.com

Clonality: Polyclonal

Tested Applications: WB, IHC, IF/ICC, IP

Recommended dilutions: Optimal dilutions/concentrations should be determined by the end user.

Immunogen: MAP2K6 (Phe46-Pro306)

Purification: Antigen-specific affinity chromatography followed by Protein A affinity chromatography.

Form: Liquid

Conjugation: Unconjugated

Storage: Store at 4 °C for frequent use. Aliquot and store at -20 °C for one year. Avoid repeated freeze/thaw cycles.

Buffer: 0.01 M PBS, pH 7.4, containing 0.05% Proclin-300, 50% glycerol.

Note: This product is for research use only.