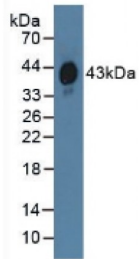
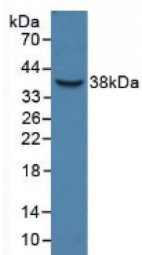


Haptoglobin Related Protein (HPR) Antibody

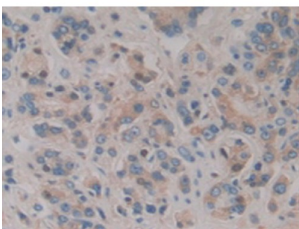
Catalogue No.: abx128825



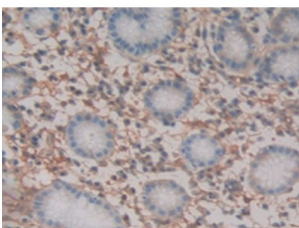
Western blot analysis of Human Serum.



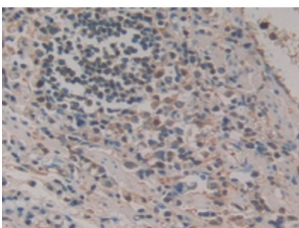
Western blot analysis of recombinant Human HPR.



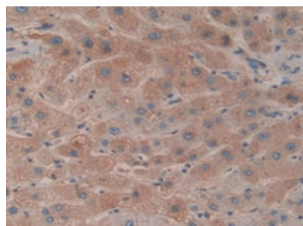
IHC-P analysis of Human Prostate Gland Cancer Tissue, with DAB staining.



IHC-P analysis of Human Stomach Tissue, with DAB staining.



IHC-P analysis of Human Stomach Cancer Tissue, with DAB staining.



IHC-P analysis of Human Liver Tissue, with DAB staining.

Haptoglobin Related Protein Antibody is a Rabbit Polyclonal against Haptoglobin Related Protein.

Target:	Haptoglobin Related Protein (HPR)
Reactivity:	Human
Host:	Rabbit
Clonality:	Polyclonal
Tested Applications:	WB, IHC, IF/ICC, IP
Recommended dilutions:	Optimal dilutions/concentrations should be determined by the end user.
Immunogen:	HPR (Asn70-Val332)
Purification:	Antigen-specific affinity chromatography followed by Protein A affinity chromatography.
Form:	Liquid
Conjugation:	Unconjugated
Storage:	Store at 4 °C for frequent use. Aliquot and store at -20 °C for one year. Avoid repeated freeze/thaw cycles.
Swiss Prot:	P00739
Buffer:	0.01 M PBS, pH 7.4, containing 0.05% Proclin-300, 50% glycerol.
Note:	This product is for research use only.