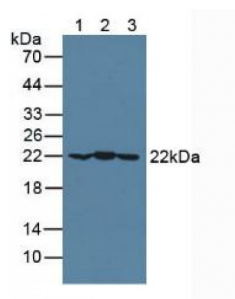


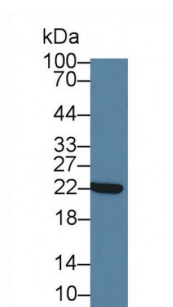
Abbexa Ltd, Innovation Centre, Cambridge Science Park, Cambridge, CB4 0EY, UK
Telephone: +44 (0) 1223 755950 - Fax: +44 (0) 1223 755951 - E-Mail: info@abbexa.com

Crystallin Alpha B (CRYaB) Antibody

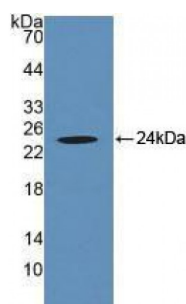
Catalogue No.: abx128853



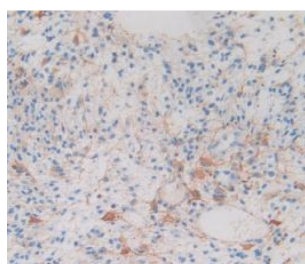
Western blot analysis of (1) Mouse Brain Tissue, (2) Mouse Heart Tissue and (3) Porcine Brain Tissue.



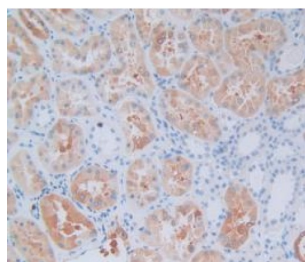
Western blot analysis of Pig Cerebrum lysate, using Rabbit Anti-Human CRYaB Antibody (3 µg/ml) and HRP-conjugated Goat Anti-Rabbit antibody ([abx400043](#), 0.2 µg/ml).



Western blot analysis of recombinant Human CRYaB.

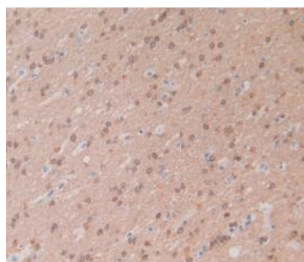


IHC-P analysis of Human Glioma Tissue, with DAB staining.



IHC-P analysis of Human Kidney Tissue, with DAB staining.

Abbexa Ltd, Innovation Centre, Cambridge Science Park, Cambridge, CB4 0EY, UK
Telephone: +44 (0) 1223 755950 - Fax: +44 (0) 1223 755951 - E-Mail: info@abbexa.com



IHC-P analysis of Human Brain Tissue, with DAB staining.

Crystallin Alpha B Antibody is a Rabbit Polyclonal against Crystallin Alpha B.

Target: Crystallin Alpha B (CRYaB)

Reactivity: Human

Host: Rabbit

Clonality: Polyclonal

Tested Applications: WB, IHC, IF/ICC, IP

Recommended dilutions: Optimal dilutions/concentrations should be determined by the end user.

Immunogen: CRYaB (Met1-Lys175)

Purification: Antigen-specific affinity chromatography followed by Protein A affinity chromatography.

Form: Liquid

Conjugation: Unconjugated

Storage: Store at 4 °C for frequent use. Aliquot and store at -20 °C for one year. Avoid repeated freeze/thaw cycles.

Swiss Prot: [P02511](#)

Buffer: 0.01 M PBS, pH 7.4, containing 0.05% Proclin-300, 50% glycerol.

Note: This product is for research use only.