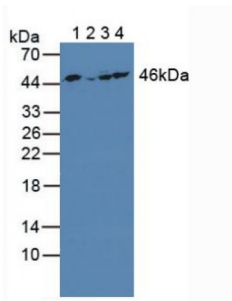


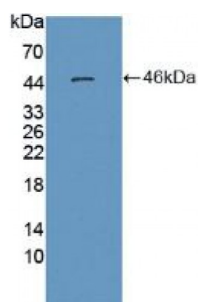
Abbexa Ltd, Innovation Centre, Cambridge Science Park, Cambridge, CB4 0EY, UK
Telephone: +44 (0) 1223 755950 - Fax: +44 (0) 1223 755951 - E-Mail: info@abbexa.com

Enolase, Muscle Specific (MSE) Antibody

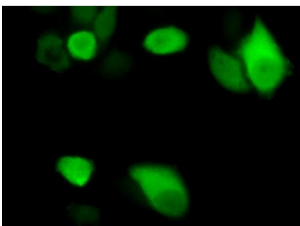
Catalogue No.: abx128941



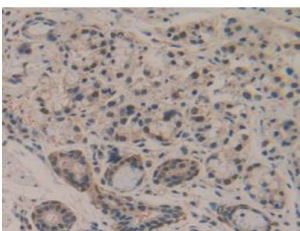
Western blot analysis of (1) Porcine Skeletal Muscle Tissue, (2) Human HeLa cells, (3) Porcine Heart Tissue and (4) Human HepG2 Cells.



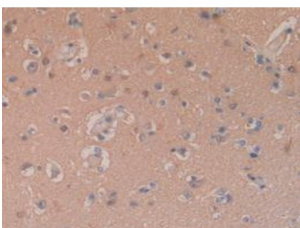
Western blot analysis of recombinant Human MSE.



IHC-P analysis of HeLa cells, with FITC staining.



IHC-P analysis of Human Stomach Cancer Tissue, with DAB staining.



IHC-P analysis of Human Brain Tissue, with DAB staining.

Enolase, Muscle Specific Antibody is a Rabbit Polyclonal against Enolase, Muscle Specific.

Abbexa Ltd, Innovation Centre, Cambridge Science Park, Cambridge, CB4 0EY, UK
Telephone: +44 (0) 1223 755950 - Fax: +44 (0) 1223 755951 - E-Mail: info@abbexa.com

Target: Enolase, Muscle Specific (MSE)

Reactivity: Human

Host: Rabbit

Clonality: Polyclonal

Tested Applications: WB, IHC, IF/ICC, IP

Recommended dilutions: Optimal dilutions/concentrations should be determined by the end user.

Immunogen: MSE (Met1-Lys391)

Purification: Antigen-specific affinity chromatography followed by Protein A affinity chromatography.

Form: Liquid

Conjugation: Unconjugated

Storage: Store at 4 °C for frequent use. Aliquot and store at -20 °C for one year. Avoid repeated freeze/thaw cycles.

Buffer: 0.01 M PBS, pH 7.4, containing 0.05% Proclin-300, 50% glycerol.

Note: This product is for research use only.