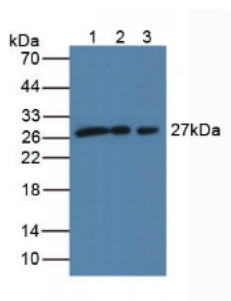


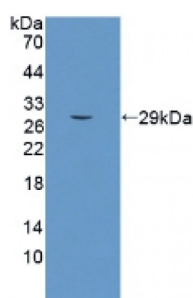
Abbexa Ltd, Innovation Centre, Cambridge Science Park, Cambridge, CB4 0EY, UK  
Telephone: +44 (0) 1223 755950 - Fax: +44 (0) 1223 755951 - E-Mail: [info@abbexa.com](mailto:info@abbexa.com)

## SCO Cytochrome Oxidase Deficient Homolog 2 (SCO2) Antibody

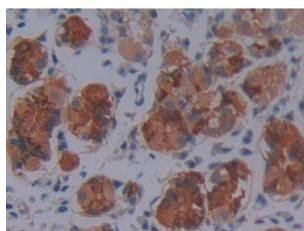
Catalogue No.: abx129130



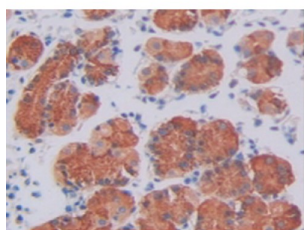
Western blot analysis of (1) Human MCF-7 Cells, (2) Human 293T Cells and (3) Human A431 Cells.



Western blot analysis of recombinant Human SCO2.



IHC-P analysis of Human Stomach Tissue, with DAB staining.



IHC-P analysis of Human Stomach Tissue, with DAB staining.

SCO Cytochrome Oxidase Deficient Homolog 2 Antibody is a Rabbit Polyclonal against SCO Cytochrome Oxidase Deficient Homolog 2.

**Target:** SCO Cytochrome Oxidase Deficient Homolog 2 (SCO2)

**Reactivity:** Human

Abbexa Ltd, Innovation Centre, Cambridge Science Park, Cambridge, CB4 0EY, UK  
Telephone: +44 (0) 1223 755950 - Fax: +44 (0) 1223 755951 - E-Mail: [info@abbexa.com](mailto:info@abbexa.com)

**Host:** Rabbit

**Clonality:** Polyclonal

**Tested Applications:** WB, IHC, IF/ICC, IP

**Recommended dilutions:** Optimal dilutions/concentrations should be determined by the end user.

**Immunogen:** SCO2 (Gly42-Ser266)

**Purification:** Antigen-specific affinity chromatography followed by Protein A affinity chromatography.

**Form:** Liquid

**Conjugation:** Unconjugated

**Storage:** Store at 4 °C for frequent use. Aliquot and store at -20 °C for one year. Avoid repeated freeze/thaw cycles.

**Buffer:** 0.01 M PBS, pH 7.4, containing 0.05% Proclin-300, 50% glycerol.

**Note:** This product is for research use only.