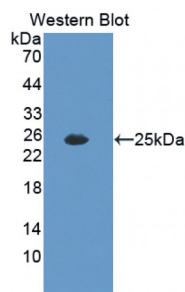


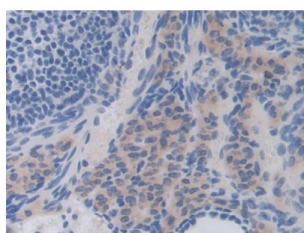
Abbexa Ltd, Innovation Centre, Cambridge Science Park, Cambridge, CB4 0EY, UK
Telephone: +44 (0) 1223 755950 - Fax: +44 (0) 1223 755951 - E-Mail: info@abbexa.com

Interleukin 35 (IL35) Antibody

Catalogue No.: abx129830



Western blot analysis of the recombinant protein.



IHC-P analysis of Mouse Ovary Tissue, with DAB staining.

Interleukin 35 Antibody is a Rabbit Polyclonal against Interleukin 35.

Target: Interleukin 35 (IL35)

Reactivity: Mouse

Host: Rabbit

Clonality: Polyclonal

Tested Applications: WB, IHC, IF/ICC, IP

Recommended dilutions: Optimal dilutions/concentrations should be determined by the end user.

Immunogen: [abx167498](#) - Recombinant IL35 (Arg23-Ala215) with two N-terminal tags, His-tag and T7-tag, expressed in E. coli.

Purification: Antigen-specific affinity chromatography followed by Protein A affinity chromatography.

Form: Liquid

Isotype: IgG

Conjugation: Unconjugated

Abbexa Ltd, Innovation Centre, Cambridge Science Park, Cambridge, CB4 0EY, UK
Telephone: +44 (0) 1223 755950 - Fax: +44 (0) 1223 755951 - E-Mail: info@abbexa.com

- Specificity:** The antibody is a rabbit polyclonal antibody raised against IL35. It has been selected for its ability to recognize IL35 in immunohistochemical staining and western blotting.
- Storage:** Store at 4 °C for frequent use. Aliquot and store at -20 °C for one year. Avoid repeated freeze/thaw cycles.
- Swiss Prot:** [P43431](#)
- Buffer:** PBS, pH 7.4, containing 0.02% NaN₃, 50% glycerol.
- Note:** This product is for research use only.