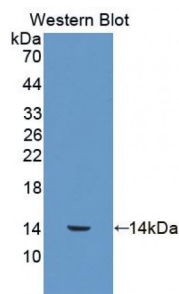


Abbexa Ltd, Innovation Centre, Cambridge Science Park, Cambridge, CB4 0EY, UK  
Telephone: +44 (0) 1223 755950 - Fax: +44 (0) 1223 755951 - E-Mail: [info@abbexa.com](mailto:info@abbexa.com)

## S100 Calcium Binding Protein A12 (S100A12) Antibody

Catalogue No.: abx130007



Western blot analysis of the recombinant protein.

S100A12 Antibody is a Guinea pig Polyclonal against S100A12.

<b>Target:</b>	S100A12
<b>Reactivity:</b>	Rabbit
<b>Host:</b>	Guinea pig
<b>Clonality:</b>	Polyclonal
<b>Tested Applications:</b>	ELISA, WB, IHC, IF/ICC
<b>Recommended dilutions:</b>	Optimal dilutions/concentrations should be determined by the end user.
<b>Immunogen:</b>	S100A12 (Thr2-Glu92)
<b>Conjugation:</b>	Unconjugated
<b>Note:</b>	This product is for research use only.