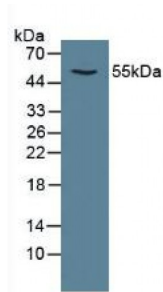


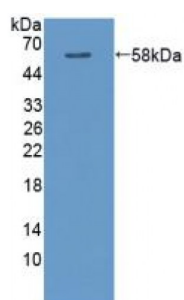
Abbexa Ltd, Innovation Centre, Cambridge Science Park, Cambridge, CB4 0EY, UK
Telephone: +44 (0) 1223 755950 - Fax: +44 (0) 1223 755951 - E-Mail: info@abbexa.com

Calcium/Calmodulin Dependent Protein Kinase II Alpha (CAMK2a) Antibody

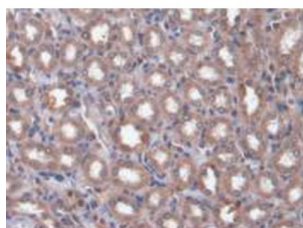
Catalogue No.: abx130056



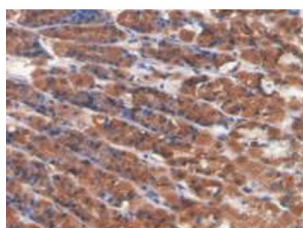
Western blot analysis of Rat Brain Tissue.



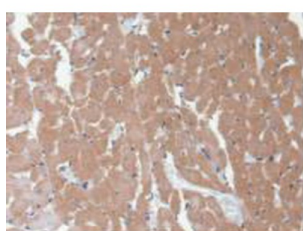
Western blot analysis of recombinant Rat CAMK2a.



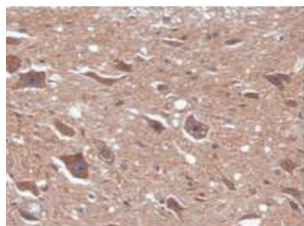
IHC-P analysis of Rat Kidney Tissue, with DAB staining.



IHC-P analysis of Rat Stomach Tissue, with DAB staining.



IHC-P analysis of Rat Heart Tissue, with DAB staining.



IHC-P analysis of Rat Spinal Cord Tissue, with DAB staining.

Calcium/Calmodulin Dependent Protein Kinase II Alpha Antibody is a Rabbit Polyclonal against Calcium/Calmodulin Dependent Protein Kinase II Alpha.

Target:	Calcium/Calmodulin Dependent Protein Kinase II Alpha (CAMK2a)
Reactivity:	Rat
Host:	Rabbit
Clonality:	Polyclonal
Tested Applications:	WB, IHC, IF/ICC, IP
Recommended dilutions:	Optimal dilutions/concentrations should be determined by the end user.
Immunogen:	CAMK2a (Met1-His478)
Purification:	Antigen-specific affinity chromatography followed by Protein A affinity chromatography.
Form:	Liquid
Conjugation:	Unconjugated
Storage:	Store at 4 °C for frequent use. Aliquot and store at -20 °C for one year. Avoid repeated freeze/thaw cycles.
Swiss Prot:	P11275
Buffer:	0.01 M PBS, pH 7.4, containing 0.05% Proclin-300, 50% glycerol.
Note:	This product is for research use only.