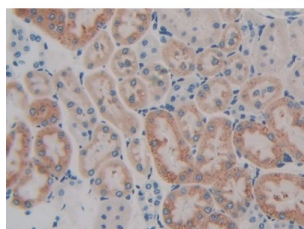


Abbexa Ltd, Innovation Centre, Cambridge Science Park, Cambridge, CB4 0EY, UK  
Telephone: +44 (0) 1223 755950 - Fax: +44 (0) 1223 755951 - E-Mail: [info@abbexa.com](mailto:info@abbexa.com)

## Gastric Inhibitory Polypeptide (GIP) Antibody

Catalogue No.: abx130323



IHC-P analysis of Rat Kidney Tissue, with DAB staining.

Gastric Inhibitory Polypeptide Antibody is a Rabbit Polyclonal against Gastric Inhibitory Polypeptide.

<b>Target:</b>	Gastric Inhibitory Polypeptide (GIP)
<b>Reactivity:</b>	Rat
<b>Host:</b>	Rabbit
<b>Clonality:</b>	Polyclonal
<b>Tested Applications:</b>	WB, IHC, IF/ICC, IP
<b>Recommended dilutions:</b>	Optimal dilutions/concentrations should be determined by the end user.
<b>Immunogen:</b>	GIP (Leu11-Leu124)
<b>Purification:</b>	Antigen-specific affinity chromatography followed by Protein A affinity chromatography.
<b>Form:</b>	Liquid
<b>Conjugation:</b>	Unconjugated
<b>Storage:</b>	Store at 4 °C for frequent use. Aliquot and store at -20 °C for one year. Avoid repeated freeze/thaw cycles.
<b>Swiss Prot:</b>	<a href="#"><u>Q06145</u></a>
<b>Buffer:</b>	PBS, pH 7.4, containing 0.02% NaN <sub>3</sub> , 50% glycerol.
<b>Note:</b>	This product is for research use only.