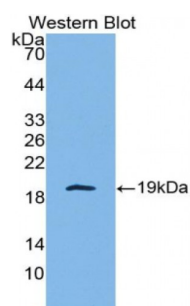


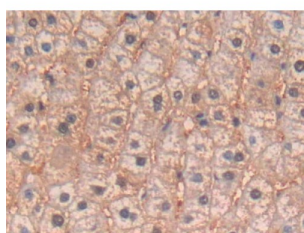
Abbexa Ltd, Innovation Centre, Cambridge Science Park, Cambridge, CB4 0EY, UK
Telephone: +44 (0) 1223 755950 - Fax: +44 (0) 1223 755951 - E-Mail: info@abbexa.com

Interleukin 4 (IL4) Antibody

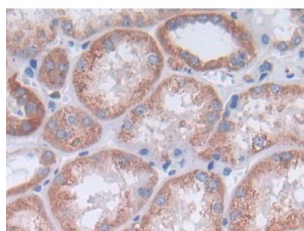
Catalogue No.: abx130734



Western blot analysis of the recombinant protein.



IHC-P analysis of Human Liver Tissue, with DAB staining.



IHC-P analysis of Kidney tissue, with DAB staining.

Interleukin 4 Antibody is a Rabbit Polyclonal against Interleukin 4.

Target: Interleukin 4 (IL4)

Reactivity: Human

Host: Rabbit

Clonality: Polyclonal

Tested Applications: WB, IHC, IF/ICC, IP

Recommended dilutions: Optimal dilutions/concentrations should be determined by the end user.

Immunogen: IL4 (His25-Ser153)

Abbexa Ltd, Innovation Centre, Cambridge Science Park, Cambridge, CB4 0EY, UK
Telephone: +44 (0) 1223 755950 - Fax: +44 (0) 1223 755951 - E-Mail: info@abbexa.com

| | |
|----------------------|--|
| Purification: | Antigen-specific affinity chromatography followed by Protein A affinity chromatography. |
| Form: | Liquid |
| Conjugation: | Unconjugated |
| Storage: | Store at 4 °C for frequent use. Aliquot and store at -20 °C for one year. Avoid repeated freeze/thaw cycles. |
| Swiss Prot: | <u>P05112</u> |
| Buffer: | PBS, pH 7.4, containing 0.01% Sarcosyl, 1 mM DTT, 5% Trehalose and Proclin300. |
| Note: | This product is for research use only. |