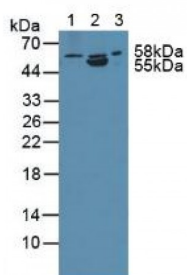


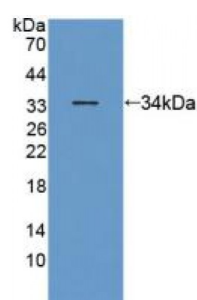
Abbexa Ltd, Innovation Centre, Cambridge Science Park, Cambridge, CB4 0EY, UK  
Telephone: +44 (0) 1223 755950 - Fax: +44 (0) 1223 755951 - E-Mail: [info@abbexa.com](mailto:info@abbexa.com)

## Anthrax Toxin Receptor 2 (ANTXR2) Antibody

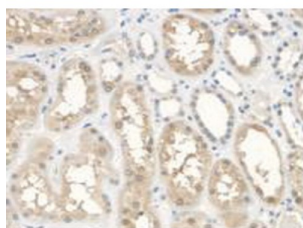
Catalogue No.: abx130902



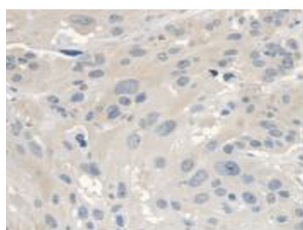
Western blot analysis of (1) Human PC-3 Cells, (2) Porcine Intestine Tissue and (3) Rat Prostate Gland Tissue.



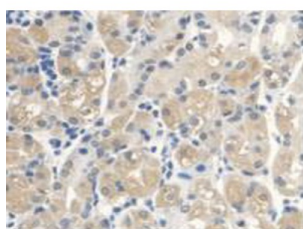
Western blot analysis of recombinant Human ANTXR2.



IHC-P analysis of Human Kidney Tissue, with DAB staining.

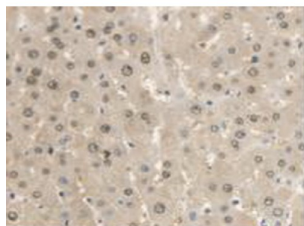


IHC-P analysis of Human Esophagus Cancer Tissue, with DAB staining.



IHC-P analysis of Human Stomach Tissue, with DAB staining.

Abbexa Ltd, Innovation Centre, Cambridge Science Park, Cambridge, CB4 0EY, UK  
Telephone: +44 (0) 1223 755950 - Fax: +44 (0) 1223 755951 - E-Mail: [info@abbexa.com](mailto:info@abbexa.com)



IHC-P analysis of Human Liver Tissue, with DAB staining.

Anthrax Toxin Receptor 2 Antibody is a Rabbit Polyclonal against Anthrax Toxin Receptor 2.

**Target:** Anthrax Toxin Receptor 2 (ANTXR2)

**Reactivity:** Human

**Host:** Rabbit

**Clonality:** Polyclonal

**Tested Applications:** WB, IHC, IF/ICC, IP

**Recommended dilutions:** Optimal dilutions/concentrations should be determined by the end user.

**Immunogen:** ANTXR2 (Gln34-Gly318)

**Purification:** Antigen-specific affinity chromatography followed by Protein A affinity chromatography.

**Form:** Liquid

**Conjugation:** Unconjugated

**Storage:** Store at 4 °C for frequent use. Aliquot and store at -20 °C for one year. Avoid repeated freeze/thaw cycles.

**Swiss Prot:** [P58335](#)

**Buffer:** 0.01 M PBS, pH 7.4, containing 0.05% Proclin-300, 50% glycerol.

**Note:** This product is for research use only.