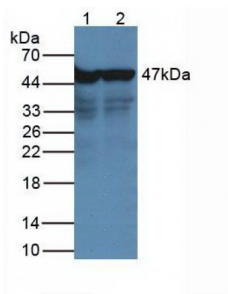


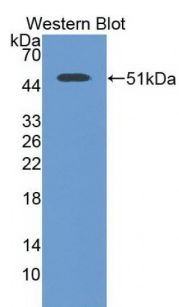
Abbexa Ltd, Innovation Centre, Cambridge Science Park, Cambridge, CB4 0EY, UK
Telephone: +44 (0) 1223 755950 - Fax: +44 (0) 1223 755951 - E-Mail: info@abbexa.com

Neuron-Specific Enolase (ENO2) Antibody

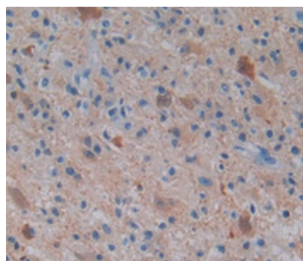
Catalogue No.: abx131861



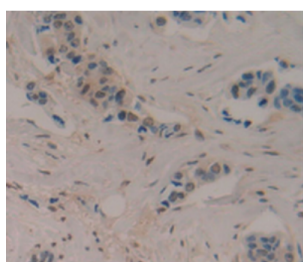
Western blot analysis of (1) Rat Serum Tissue, and (2) Rat Spleen Tissue, using Rabbit Anti-Human NSE Antibody (2 µg/ml) and HRP-conjugated Rabbit Anti-Mouse antibody ([abx400002](#), 1:5000 dilution).



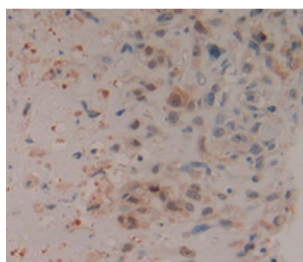
Western blot analysis of the recombinant protein.



IHC-P analysis of Human Glioma Tissue, with DAB staining.

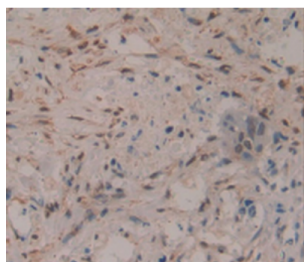


IHC-P analysis of Human Breast Cancer Tissue, with DAB staining.



IHC-P analysis of Human Lung Cancer Tissue, with DAB staining.

Abbexa Ltd, Innovation Centre, Cambridge Science Park, Cambridge, CB4 0EY, UK
Telephone: +44 (0) 1223 755950 - Fax: +44 (0) 1223 755951 - E-Mail: info@abbexa.com



IHC-P analysis of Human Pancreas Cancer Tissue, with DAB staining.

ENO2 Antibody is a Mouse Monoclonal against ENO2.

Target: ENO2

Reactivity: Human

Host: Mouse

Clonality: Monoclonal

Tested Applications: WB, IHC, IF/ICC, IP

Recommended dilutions: Optimal dilutions/concentrations should be determined by the end user.

Immunogen: Met1-Leu434

Purification: Protein A + Protein G affinity chromatography.

Form: Liquid

Conjugation: Unconjugated

Storage: Store at 4 °C for frequent use. Aliquot and store at -20 °C for one year. Avoid repeated freeze/thaw cycles.

Swiss Prot: [P09104](#)

Buffer: PBS, pH 7.4, containing 0.02% NaN₃, 50% glycerol.

Note: This product is for research use only.