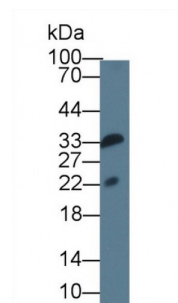


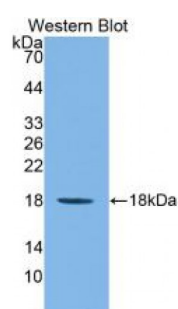
Abbexa Ltd, Innovation Centre, Cambridge Science Park, Cambridge, CB4 0EY, UK  
Telephone: +44 (0) 1223 755950 - Fax: +44 (0) 1223 755951 - E-Mail: [info@abbexa.com](mailto:info@abbexa.com)

## Interleukin 1 Family, Member 9 (IL1F9) Antibody

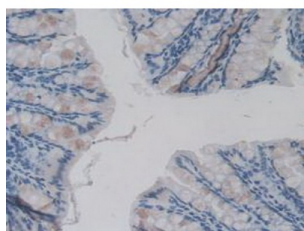
Catalogue No.: abx131960



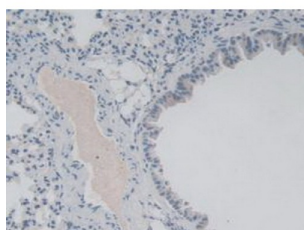
Western blot analysis of Rat Serum, using Mouse IL1F9 Antibody (3 µg/ml) and HRP-conjugated Goat Anti-Mouse antibody ([abx400001](#), 0.2 µg/ml).



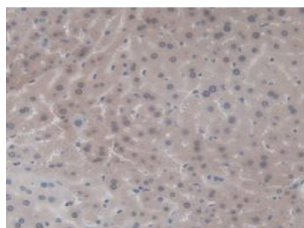
Western blot analysis of recombinant Mouse IL1F9.



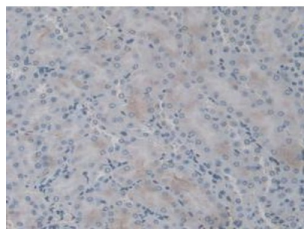
IHC-P analysis of Mouse Intestine Tissue, with DAB staining.



IHC-P analysis of Mouse Lung Tissue, with DAB staining.



IHC-P analysis of Mouse Liver Tissue, with DAB staining.



IHC-P analysis of Mouse Kidney Tissue, with DAB staining.

Interleukin 1 Family, Member 9 Antibody is a Rat Monoclonal against Interleukin 1 Family, Member 9.

**Target:** Interleukin 1 Family, Member 9 (IL1F9)

**Reactivity:** Mouse

**Host:** Rat

**Clonality:** Monoclonal

**Tested Applications:** WB, IHC, IF/ICC, IP

**Recommended dilutions:** Optimal dilutions/concentrations should be determined by the end user.

**Immunogen:** His5-Lys149

**Purification:** Protein A + Protein G affinity chromatography.

**Form:** Liquid

**Isotype:** IgG<sub>1</sub> Kappa

**Conjugation:** Unconjugated

**Storage:** Store at 4 °C for frequent use. Aliquot and store at -20 °C for one year. Avoid repeated freeze/thaw cycles.

**Swiss Prot:** [Q8R460](#)

**Buffer:** 0.01 M PBS, pH 7.4, containing 0.05% Proclin-300, 50% glycerol.

**Note:** This product is for research use only.