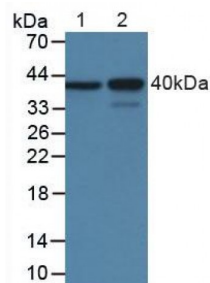


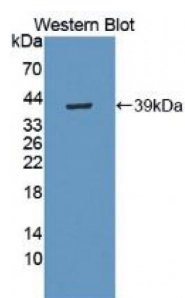
Abbexa Ltd, Innovation Centre, Cambridge Science Park, Cambridge, CB4 0EY, UK
Telephone: +44 (0) 1223 755950 - Fax: +44 (0) 1223 755951 - E-Mail: info@abbexa.com

Myelin Basic Protein (MBP) Antibody

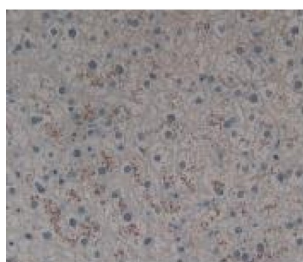
Catalogue No.: abx131999



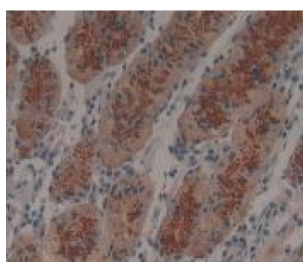
Western blot analysis of (1) Rat Brain Tissue and (2) Porcine Brain Tissue.



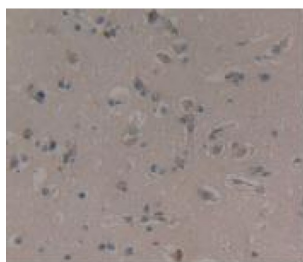
Western blot analysis of recombinant Human MBP.



IHC-P analysis of Human Liver Tissue, with DAB staining.



IHC-P analysis of Human Stomach Tissue, with DAB staining.



IHC-P analysis of Human Brain Tissue, with DAB staining.

Myelin Basic Protein Antibody is a Mouse Monoclonal against Myelin Basic Protein.

Abbexa Ltd, Innovation Centre, Cambridge Science Park, Cambridge, CB4 0EY, UK
Telephone: +44 (0) 1223 755950 - Fax: +44 (0) 1223 755951 - E-Mail: info@abbexa.com

Target: Myelin Basic Protein (MBP)

Reactivity: Human

Host: Mouse

Clonality: Monoclonal

Tested Applications: WB, IHC, IF/ICC, IP

Recommended dilutions: Optimal dilutions/concentrations should be determined by the end user.

Immunogen: Val220-Met301

Purification: Protein A + Protein G affinity chromatography.

Form: Liquid

Conjugation: Unconjugated

Storage: Store at 4 °C for frequent use. Aliquot and store at -20 °C for one year. Avoid repeated freeze/thaw cycles.

Swiss Prot: [P02686](#)

Buffer: 0.01 M PBS, pH 7.4, containing 0.05% Proclin-300, 50% glycerol.

Note: This product is for research use only.