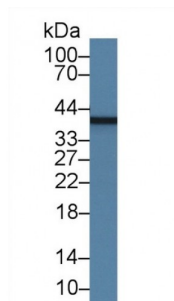


Abbexa Ltd, Innovation Centre, Cambridge Science Park, Cambridge, CB4 0EY, UK
Telephone: +44 (0) 1223 755950 - Fax: +44 (0) 1223 755951 - E-Mail: info@abbexa.com

Myelin Basic Protein (MBP) Antibody

Catalogue No.: abx132000



Western blot analysis of Rat Cerebrum lysate, using Human MBP Antibody (1 µg/ml) and HRP-conjugated Goat Anti-Mouse antibody ([abx400001](#), 0.2 µg/ml).

Myelin Basic Protein Antibody is a Mouse Monoclonal against Myelin Basic Protein.

Target:	Myelin Basic Protein
Reactivity:	Human
Host:	Mouse
Clonality:	Monoclonal
Tested Applications:	WB, IHC, IF/ICC, IP
Recommended dilutions:	Optimal dilutions/concentrations should be determined by the end user.
Purification:	Protein A + Protein G affinity chromatography.
Form:	Liquid
Conjugation:	Unconjugated
Storage:	Store at 4 °C for frequent use. Aliquot and store at -20 °C for one year. Avoid repeated freeze/thaw cycles.
Swiss Prot:	P02686
Buffer:	PBS, pH 7.4, containing 0.02% NaN ₃ , 50% glycerol.
Note:	This product is for research use only.